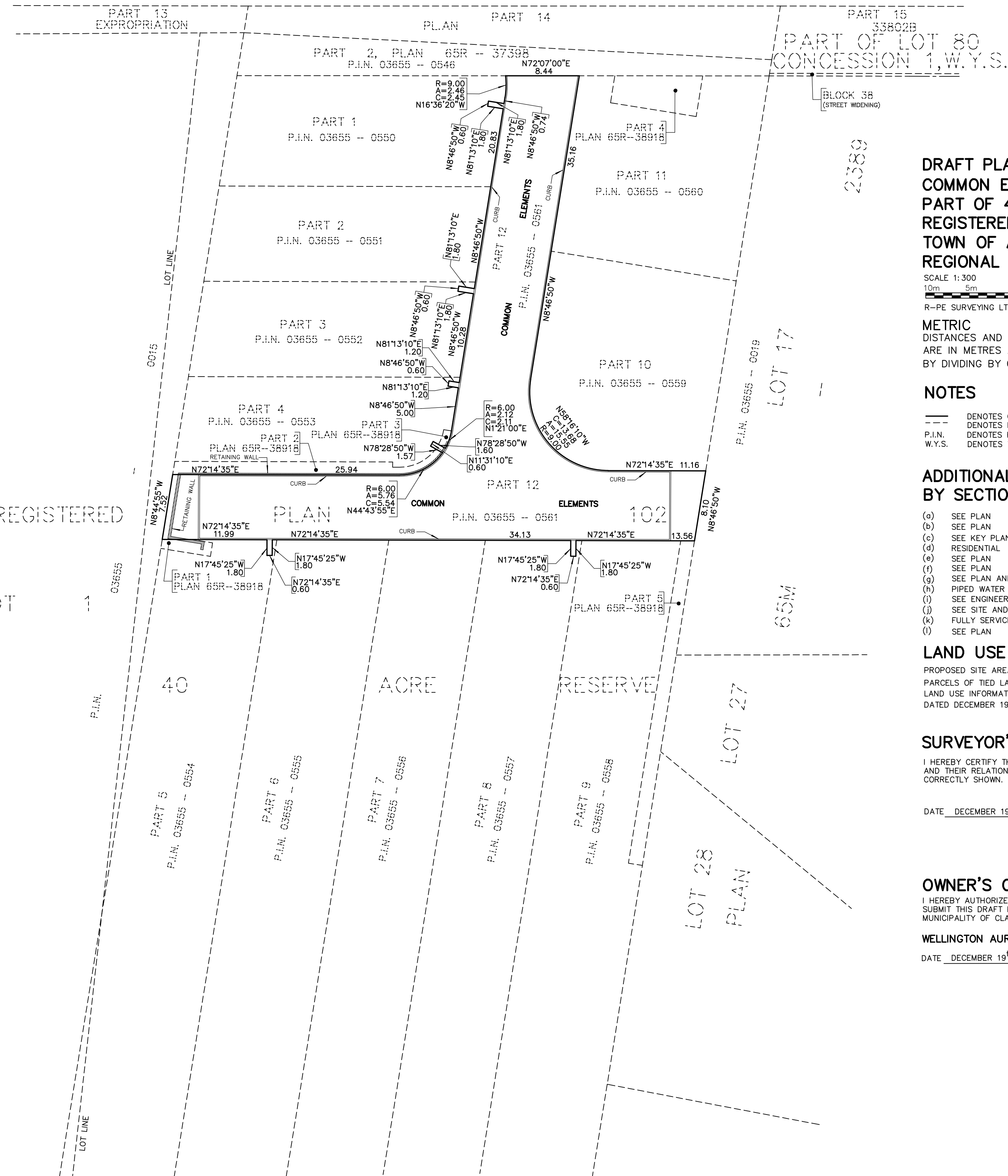
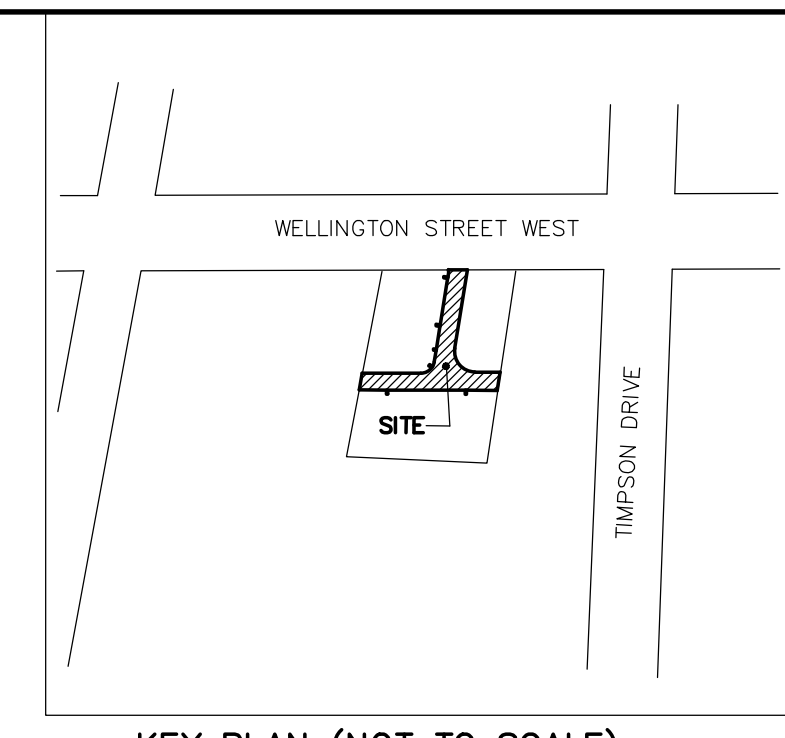




(KNOWN AS) WELLINGTON STREET WEST
(ROAD ALLOWANCE BETWEEN LOTS 80 AND 81, CONCESSION 1)



**DRAFT PLAN OF
COMMON ELEMENTS CONDOMINIUM OF
PART OF 40 ACRE RESERVE,
REGISTERED PLAN 102
TOWN OF AURORA
REGIONAL MUNICIPALITY OF YORK**

SCALE 1:300
10m 5m 0 10m 20 metres
R-PE SURVEYING LTD., O.L.S.

METRIC
DISTANCES AND COORDINATES SHOWN ON THIS PLAN
ARE IN METRES AND CAN BE CONVERTED TO FEET
BY DIVIDING BY 0.3048.

NOTES

- DENOTES CONDOMINIUM LIMITS
- DENOTES POTL LIMITS
- P.I.N. DENOTES PROPERTY IDENTIFIER NUMBER
- W.Y.S. DENOTES WEST OF YONGE STREET

**ADDITIONAL INFORMATION AS REQUIRED
BY SECTION 51(17) OF THE PLANNING ACT**

- (a) SEE PLAN
- (b) SEE PLAN
- (c) SEE KEY PLAN
- (d) RESIDENTIAL
- (e) SEE PLAN
- (f) SEE PLAN
- (g) SEE PLAN AND KEY PLAN
- (h) PIPED WATER AVAILABLE
- (i) SEE ENGINEERING SOILS REPORT
- (j) SEE SITE AND GRADING PLAN
- (k) FULLY SERVICED
- (l) SEE PLAN

LAND USE

PROPOSED SITE AREA (COMMON ELEMENTS AREA) = 871.00m².
PARCELS OF TIED LAND (POTL): 11 POTLs
LAND USE INFORMATION OBTAINED FROM SITE PLAN BY 3 SIXTY ARCHITECT INC.
DATED DECEMBER 19, 2022

SURVEYOR'S CERTIFICATE

I HEREBY CERTIFY THAT THE BOUNDARIES OF THE LANDS TO BE SUBDIVIDED
AND THEIR RELATIONSHIP TO THE ADJOINING LANDS ARE ACCURATELY AND
CORRECTLY SHOWN.

DATE DECEMBER 19th, 2022

S. GONWARDENA
S. GONWARDENA
ONTARIO LAND SURVEYOR

OWNER'S CERTIFICATE

I HEREBY AUTHORIZE R-PE SURVEYING LTD., O.L.S. TO PREPARE AND
SUBMIT THIS DRAFT PLAN OF COMMON ELEMENTS CONDOMINIUM TO THE
MUNICIPALITY OF CLARINGTON FOR APPROVAL.

WELLINGTON AURORA DEVELOPMENTS INC.
DATE DECEMBER 19th, 2022

Jack Greenberg
JACK GREENBERG
AUTHORIZED SIGNING OFFICER
I HAVE THE AUTHORITY TO BIND THE CORPORATION

REGISTERED PLAN 65M -- 2462
BLOCK 129
LOT 29

Subject to the conditions if any, set forth in our letter dated
Friday, May 5, 2023
the Draft Plan is approved under Section 51 of the Planning Act,
R.S.O.1990, and Section 9 of the Condominium Act, R.S.O. 1998,
this 5 Day of May, 2023

Marco Ramunno
Marco Ramunno, MCIP, RPP
Director of Planning and Development Services

rpe R-PE SURVEYING LTD.
ONTARIO LAND SURVEYORS
643 Chrislea Road, Suite 7
Woodbridge, Ontario L4L 8A3
Tel. (416) 635-5000 Fax (416) 635-5001
Tel. (905) 264-0881 Fax (905) 264-2099
Website: www.r-pe.ca
DRAWN: A.Q. CHECKED:
JOB No. 22-345 CAD FILE No. 22345-CEC-01