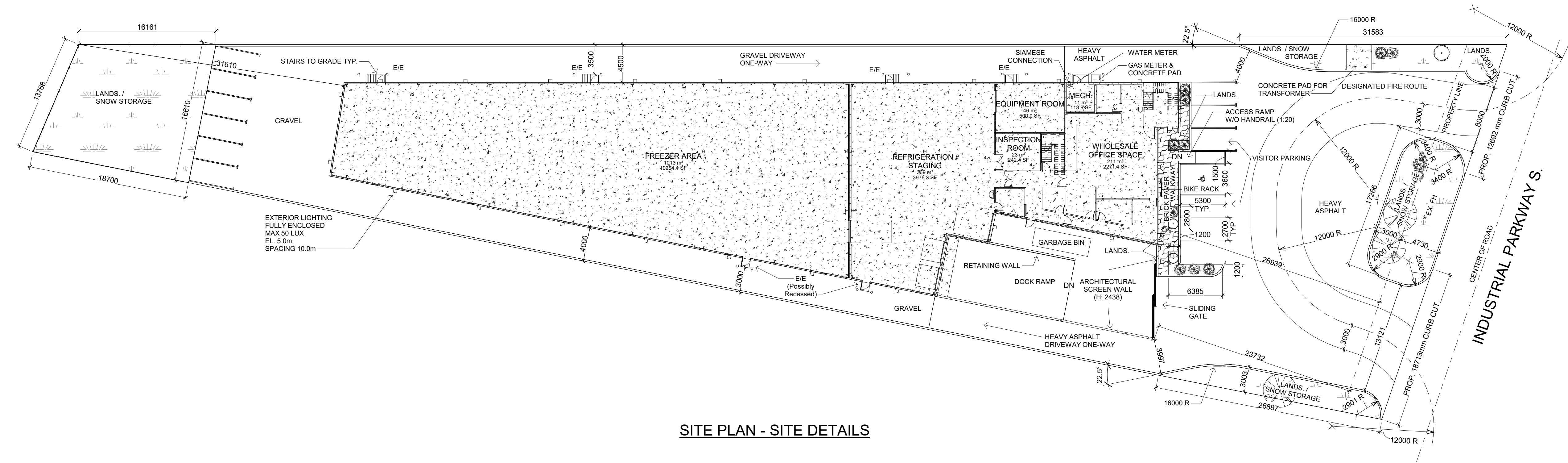


SITE PLAN - GRID LINES



SITE PLAN - SITE DETAILS

No.	DATE MM.DD.YY	REVISIONS	BY
1.	03.07.24	SUBMITTED FOR SITE PLAN APPROVAL	JR

SCALE
1:250
RAE FILE REFERENCE
24082801
DATE
01.29.2025



ENGINEERING DESIGN AND OTHER PERTINENT INFORMATION PROVIDED IN THIS DRAWING IS AN EXCLUSIVE PROPERTY OF RA ENGINEERING INC. LOCATED AT 18075 LESLIE STREET, NEWMARKET, ONTARIO, CANADA (WWW.RAENGINEER.COM). THIS DESIGN IS PREPARED FOR THE 320 INDUSTRIAL PARKWAY S FOR CEPE PROJECT (RAE PROJECT #24082801) ONLY AND SHALL NOT BE USED FULLY OR PARTIALLY IN ANY OTHER PROJECTS OR APPLICATIONS WITHOUT A WRITTEN CONSENT FROM RA ENGINEERING INC.



320 INDUSTRIAL PARKWAY S
TOWN OF AURORA
YORK REGION

DRAWN BY
JR
DESIGNER
JR/AM
CHECKED BY
RN/JN

320 INDUSTRIAL PARKWAY S FOR CEPE
SITE PLAN

DWG NO.
24082801-A-102
CONTRACT NO.
24082801
SHEET NO.
A102