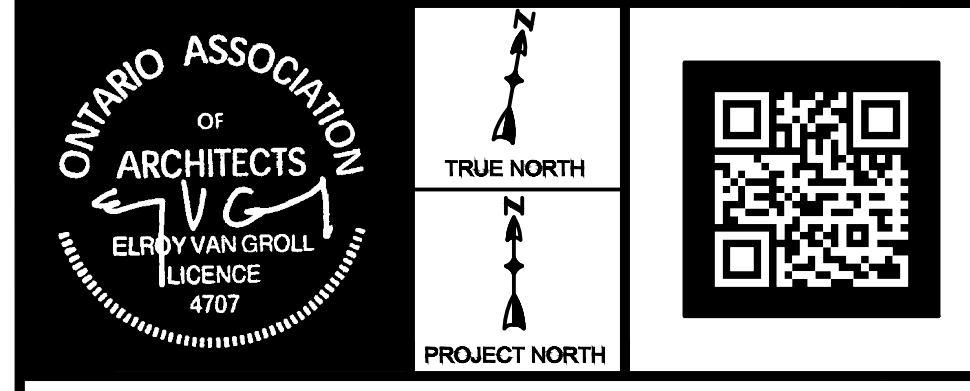


DO NOT SCALE THESE DRAWINGS. ALL DIMENSIONS ARE TO FINISHED GYPSUM BOARD, CABINETS, OR FIXTURES. EXCEPTION - COOLERS AND FREEZERS ARE DIMENSIONED FROM OUTSIDE WALL TO OUTSIDE WALL, OR OUTSIDE WALL TO CENTRE OF COMMON WALL

ALL WORK TO BE DONE IN ACCORDANCE WITH THE MOST RECENT EDITIONS OF MUNICIPAL AND PROVINCIAL CODES AND BYLAWS.

THE CONTRACTOR MUST VERIFY AND CHECK ALL SITE CONDITIONS, PROJECT DRAWINGS, DETAILS, AND SPECIFICATIONS AND REPORT ALL ERRORS, OMISSIONS AND DISCREPANCIES TO THE CLIENT AND ARCHITECT.

ALL DESIGNS, DRAWINGS AND SPECIFICATIONS ARE OWNED BY DOGTOPIA AND WERE CREATED SOLELY FOR THIS SPECIFIC PROJECT. NONE OF THESE DESIGNS OR PLANS SHALL BE USED BY, DISCLOSED TO, OR REPRODUCED BY ANY PERSON, FIRMS OR CORPORATIONS FOR ANY PURPOSE WHATSOEVER WITHOUT THE WRITTEN PERMISSION OF DOGTOPIA.



VGA van Groll & Associates Inc.
295 Robinson Street, Suite 300
Oakville, ON. L6J 1G7
905 339 2811 vangrollassociates.com

ARCHITECTURE

TOWN OF AURORA
APPROVED

DATE: 22-Nov-2023

M. Ramirez
DIRECTOR OF PLANNING AND
DEVELOPMENT SERVICES

NO.	REVISIONS	BY	DATE

DRAWING NAME:
KEY PLAN/ OUTDOOR PLAY

PROJECT TYPE:
INTERIOR ALTERATION

BANNER:
dogtopia
daycare - boarding - spa

PROJECT NO:
23-143-122

STORE No.
PRELIM:
FINAL:

LOCATION:
**14889 YONGE ST
AURORA, ONTARIO**

DRAWING No.
A0.0

DRAWN BY: Chris CHECKED BY: CHL DATE: 4/10/2023 SCALE: AS NOTED