

## 2015 Repair and Replacement Capital Projects

### Summarized by Results of Council Discussions

Project ID	Project	New 2015 Requests
------------	---------	-------------------

#### Facilities

72133	ACC - Re-pave Lot	1,419,500
72201	Work Station Refresh, Carpet, etc	90,000
72203	TH - Building Humidifiers	35,000
72204	Cameras - HDIP	25,000
72205	TH - Elevator Card Access	10,000
72219	22 Church St/Library - Exterior Repairs	35,000
72226	AFLC - Arena Dehumidifiers	135,000
72228	AFLC - Rink Floor	30,000
72232	Library - Exterior Concrete Re & Re	40,000
72233	Library - Horizontal Interior Drain	50,000
72235	ACC - Roof Top H & S Equipment	48,000
72236	SARC - Ice Plant, Starters, Motors etc	35,000
72238	TH - Council Chambers A/V System	65,000
72239	ACC - Elevator Cab and Mech Controller	70,000
72241	89 Mosley - Condition Assessment Report (recommended repairs component only)	150,000
72243	AFLC - Mould Abatement (duplicate - withdrawn)	136,580
72244	Sign Board - Yonge & Orchard Hts	15,000
<b>Facilities Sub Total</b>		<b>\$ 2,389,080</b>

#### Fleet

34155	1/2 Tonne Pick-Up #500	30,000
34156	Ice Resurfacers Replacement #591	85,000
34189	GMC Savana #11	45,000
34190	GMC Savana #12	45,000
34194	Frt/FL80 #29	180,000
<b>Fleet Sub-Total</b>		<b>\$ 385,000</b>

#### Roads

31025	Asphalt Paving - Old Bloomington Rd	25,000
31096	Recon - Bluegrass, Steeplechase et al	1,800,000
31103	Recon - Centre St - Spruce St to Walton	802,000
31105	Recon - Haida Dr & Trillium Dr	75,000
31107	Recon - Brookland - Yonge - Banbury	48,000
31108	Recon - Algonquin Cres & Haida Dr	100,000
31111	Recon - Catherine Ave	50,000
31112	Recon - Industrial Pkwy S - Wellington to Industry St	1,995,000
31144	Field Asset Data Wireless Devices	90,000
31147	Pavement Condition Assessment	104,000
34710	Streetlight Poles - St John's	35,000
34711	Streetlight Poles - Bayview	75,000
<b>Roads Sub-Total</b>		<b>\$ 5,199,000</b>

**Parks & Recreation**

73134	Parks/ Trails Signage Strategy Study	157,500
73154	Playground Surface Restoration	10,000
73160	Emerald Ash Borer Management Program	235,000
73193	Parks - Bridge Assessment	50,000
73206	Playground Replacement - E Hadar Park	100,000
73268	Wildlife Park - North Dam Rehabilitation	100,000
73272	Hillary House Heritage Fencing Repair	20,000
<b>Parks &amp; Recreation Sub-Total</b>		<b>\$ 672,500</b>

**Discretionary**

12002	Accessibility Committee	125,000
<b>Discretionary Sub Total</b>		<b>\$ 125,000</b>

**Information Technology**

14047	Computer & Related Infrastructure	72,800
<b>Information Technology Sub Total</b>		<b>\$ 72,800</b>

**Rates**

41007	Decommission Sewer - Wells St PS	300,000
41009	3 Phase Electrical Power	30,000
42052	Channel Improvements - Child Drive	721,000
42053	Rehabilitation of Culvert on Yonge St	445,000
42054	Maintenance of Culverts - Yonge/Batson	100,000
42058	Bridge Assessment	100,000
43038	Water Meter Replacement	400,000
43053	Reconnection - Bathurst/Orchard Hts	70,000
<b>Rate Sub-Total</b>		<b>\$ 2,166,000</b>

**TOTAL PROJECT FUNDING APPROVED AS PRESENTED** \$ 11,009,380

**APPROVED PENDING FURTHER REPORT**

72164	SARC - Rubber Flooring	134,600
72241	89 Mosley - alternations for future uses component only	100,000
72242	AFLC -Roofing	2,000,000
34191	GMC Savana #501	35,000
73269	Case Woodlot Perimeter Fencing	70,000

**TOTAL PROJECT FUNDING APPROVED PENDING FURTHER REPORT** 2,339,600

**TOTAL 2015 REPAIR & REPLACEMENT CAPITAL BUDGET** \$ 13,348,980





**Town of Aurora**

**Capital Projects**

<b>Project</b>	72133 ACC - Re-pave Lot		
<b>Department</b>	Infrastructure & Environmental Services		
<b>Version</b>	Final Approved Budget	<b>Year</b>	2015

**Gallery**

C:\Users\Aaron Karmazyn\Documents\2014 Capital\DSCF0936.JPG







# Town of Aurora

## Capital Projects

<b>Project</b>	72201 Work Station Refresh Carpet Paint		
<b>Department</b>	Infrastructure & Environmental Services		
<b>Version</b>	Final Approved Budget	<b>Year</b>	2015

### Gallery

C:\Users\Palma Palombi\Desktop\DSCF0522.jpg



**Town of Aurora**

**Capital Projects**

<b>Project</b>	72201 Work Station Refresh Carpet Paint		
<b>Department</b>	Infrastructure & Environmental Services		
<b>Version</b>	Final Approved Budget	<b>Year</b>	2015

**Gallery**

C:\Users\Palma Palombi\Desktop\DSCF0523.jpg





Town of Aurora

Capital Projects

Project	72201 Work Station Refresh Carpet Paint		
Department	Infrastructure & Environmental Services		
Version	Final Approved Budget	Year	2015

Gallery

C:\Users\Palma Palombi\Desktop\DSCF0022.jpg



# Town of Aurora

## Capital Projects

<b>Project</b>	72201 Work Station Refresh Carpet Paint		
<b>Department</b>	Infrastructure & Environmental Services		
<b>Version</b>	Final Approved Budget	<b>Year</b>	2015

### Gallery

C:\Users\Palma Palombi\Desktop\DSCF0023.jpg







**Town of Aurora**

**Capital Projects**

<b>Project</b>	72203 Town Hall - Building Humidifiers Replacement		
<b>Department</b>	Infrastructure & Environmental Services		
<b>Version</b>	Final Approved Budget	<b>Year</b>	2015

**Gallery**

C:\Users\Palma Palombi\Desktop\DSCF0500.jpg



**Town of Aurora**

**Capital Projects**

<b>Project</b>	72203 Town Hall - Building Humidifiers Replacement		
<b>Department</b>	Infrastructure & Environmental Services		
<b>Version</b>	Final Approved Budget	<b>Year</b>	2015

**Gallery**

C:\Users\Palma Palombi\Desktop\DSCF0504.jpg







# Town of Aurora

## Capital Projects

Project	72204 Cameras - HDIP		
Department	Infrastructure & Environmental Services		
Version	Final Approved Budget	Year	2015

### Gallery

C:\Users\Palma Palombi\Desktop\DSCF0518.jpg



# Town of Aurora

## Capital Projects

Project	72204 Cameras - HDIP		
Department	Infrastructure & Environmental Services		
Version	Final Approved Budget	Year	2015

### Gallery

C:\Users\Palma Palombi\Desktop\DSCF0519.jpg





**Town of Aurora**

**Capital Projects**

<b>Project</b>	72204 Cameras - HDIP		
<b>Department</b>	Infrastructure & Environmental Services		
<b>Version</b>	Final Approved Budget	<b>Year</b>	2015

**Gallery**

C:\Users\Palma Palombi\Desktop\DSCF0521.jpg





Town of Aurora

Capital Projects

<b>Project</b>	72205 Town Hall - Elevator Card Access		
<b>Department</b>	Infrastructure & Environmental Services		
<b>Version</b>	Final Approved Budget	<b>Year</b>	2015

**Gallery**

C:\Users\Palma Palombi\Desktop\DSCF0513.jpg





**Town of Aurora**

**Capital Projects**

<b>Project</b>	72205 Town Hall - Elevator Card Access		
<b>Department</b>	Infrastructure & Environmental Services		
<b>Version</b>	Final Approved Budget	<b>Year</b>	2015

**Gallery**

C:\Users\Palma Palombi\Desktop\DSCF0514.jpg





**Town of Aurora**

**Capital Projects**

<b>Project</b>	72219 22 Church/Library Exterior Repairs (Drainage and Walkways)		
<b>Department</b>	Infrastructure & Environmental Services		
<b>Version</b>	Final Approved Budget	<b>Year</b>	2015

**Gallery**

C:\Users\Palma Palombi\Desktop\Library Square concrete concerns 001.jpg







Town of Aurora

Capital Projects

Project	72226 AFLC HVAC Arena		
Department	Infrastructure & Environmental Services		
Version	Final Approved Budget	Year	2015

Gallery

C:\Users\Palma Palombi\Desktop\DSCF0497.jpg





# Town of Aurora

## Capital Projects

<b>Project</b>	72232 Library Exterior Concrete Re and Re		
<b>Department</b>	Infrastructure & Environmental Services		
<b>Version</b>	Final Approved Budget	<b>Year</b>	2015

### Description

**PURPOSE:**

Over the winter of 2013/14 the parking lot and walkways around the Aurora Public Library have shifted, walkways are unsafe, concrete slabs were raised due to the frost going deep into the ground during the winter of 2014. The goal of the work is to make the area safe and remove all of the shifted concrete in the area and replace it with new.

**PERFORMANCE/ACTIVITY IMPACTS:**

This work is requested as we are concerned that the public could trip on the uneven pavement and stairs surrounding the Library. It is included in the 10 year capital plan.

**EXPLANATION/HIGHLIGHTS**

We looked at repairing the walkways this year but we did not have the room in the operational budgets, over the summer some of the heaving had dropped as some slabs were raised over an inch. They have dropped but they are not level. Other slabs have separated and some interlocking stairs have shifted and are difficult to transverse. We expect that over the winter of 2014/2015 the situation will continue to deteriorate and we want to have the funds to repair the stairs and walkways in the area.

Class "D" estimate

### Budget

	Total	2015	2016	2017	2018	2019	2020	Future
<b>Expenditures</b>								
<b>Estimated Expenditures</b>								
CONTRACTS	40,000	40,000						
<b>Expenditures Total</b>	<b>40,000</b>	<b>40,000</b>						
<b>Funding</b>								
<b>Infrastructure Sustainability Reserves</b>								
BLDG, FURN & FIX R&R RESERVE	40,000	40,000						
<b>Funding Total</b>	<b>40,000</b>	<b>40,000</b>						
<b>Total Over (Under) Funded</b>								



**Town of Aurora**

**Capital Projects**

<b>Project</b>	72232 Library Exterior Concrete Re and Re		
<b>Department</b>	Infrastructure & Environmental Services		
<b>Version</b>	Final Approved Budget	<b>Year</b>	2015

**Gallery**

*C:\Users\Palma Palombi\Desktop\Library Square concrete concerns 013.jpg*







**Town of Aurora**

**Capital Projects**

<b>Project</b>	72233 Library Horizontal Interior Drain Replacement		
<b>Department</b>	Infrastructure & Environmental Services		
<b>Version</b>	Final Approved Budget	<b>Year</b>	2015

**Gallery**

C:\Users\Palma Palombi\Desktop\2015 Capital item pictures 017.jpg



**Town of Aurora**

**Capital Projects**

<b>Project</b>	72233 Library Horizontal Interior Drain Replacement		
<b>Department</b>	Infrastructure & Environmental Services		
<b>Version</b>	Final Approved Budget	<b>Year</b>	2015

**Gallery**

C:\Users\Palma Palombi\Desktop\1\_Ponding\_Library\_Pipe.JPG



# Town of Aurora

## Capital Projects

<b>Project</b>	72235 ACC Roof Top H & S Equipment		
<b>Department</b>	Infrastructure & Environmental Services		
<b>Version</b>	Final Approved Budget	<b>Year</b>	2015

### Description

**PURPOSE:**

Roof top Safety Equipment: Ministry Of Labour, SITE INSPECTION

The existing roof hatch is a safety hazard and does not meet Ministry of Labour (MOL) requirements. Furthermore, MOL suggested that safety rails be installed around all roof top equipment that are serviced and are within 2 meters of the roof edge. Recently a MOL representative visited this facility and deemed the roof hatch unusable due to safety concerns. IT IS NOW LOCKED OFF.

**PERFORMANCE/ACTIVITY IMPACTS:**

We have been inspected by MOL and we will need to address some safety issues on the roof. Access to the roof is now limited and we will have to look at addressing all of the noted safety concerns. The major issue is the installation of 70 feet of guard railing around the roof top unit of the ACC 1 and this changes the appearance of the facility as the guardrail will be evident from the ground. Service staff could potentially fall off the roof while servicing our HVAC equipment as noted by MOL. It is included in the 10 year capital plan.

**EXPLANATION/HIGHLIGHTS**

The project would:

- 1) Supply and Install approximately 17' exterior access ladder complete with cage, prime painted
- 2) Supply and Install approximately 70 linear feet of Modu-Guard Railing, hot dipped galvanized
- 3) Remove a fixed window and replace with an opening unit to the roof

After consultation with the Parks and Recreation department, this project will have no impact to any event planning and programming and the planned timing for this work is the summer of 2015.

Class "B" estimate.

### Budget

	Total	2015	2016	2017	2018	2019	2020	Future
<b>Expenditures</b>								
<b>Estimated Expenditures</b>								
CONTRACTS	48,000	48,000						
	48,000	48,000						
<b>Expenditures Total</b>	<b>48,000</b>	<b>48,000</b>						
<b>Funding</b>								
<b>Infrastructure Sustainability Reserves</b>								
BLDG, FURN & FIX R&R RESERVE	48,000	48,000						
	48,000	48,000						
<b>Funding Total</b>	<b>48,000</b>	<b>48,000</b>						
<b>Total Over (Under) Funded</b>								



**Town of Aurora**

**Capital Projects**

<b>Project</b>	72235 ACC Roof Top H & S Equipment		
<b>Department</b>	Infrastructure & Environmental Services		
<b>Version</b>	Final Approved Budget	<b>Year</b>	2015

**Gallery**

C:\Users\Palma Palombi\Desktop\ACC roof hatch 005.jpg







# Town of Aurora

## Capital Projects

<b>Project</b>	72236 SARC, Ice Plant, Replacement of Starters, Motors & add VFDs		
<b>Department</b>	Infrastructure & Environmental Services		
<b>Version</b>	Final Approved Budget	Year	2015

### Gallery

C:\Users\Palma Palombi\Desktop\DSCF0018.jpg



# Town of Aurora

## Capital Projects

<b>Project</b>	72236 SARC, Ice Plant, Replacement of Starters, Motors & add VFDs		
<b>Department</b>	Infrastructure & Environmental Services		
<b>Version</b>	Final Approved Budget	<b>Year</b>	2015

### Gallery

C:\Users\Palma Palombi\Desktop\DSCF0019.jpg





# Town of Aurora

## Capital Projects

Project

72236 SARC, Ice Plant, Replacement of Starters, Motors & add VFDs

Department

Infrastructure & Environmental Services

Version

Final Approved Budget

Year

2015

### Gallery

C:\Users\Palma Palombi\Desktop\DSCF0020.jpg



# Town of Aurora

## Capital Projects

Project	72236 SARC, Ice Plant, Replacement of Starters, Motors & add VFDs		
Department	Infrastructure & Environmental Services		
Version	Final Approved Budget	Year	2015

### Gallery

C:\Users\Palma Palombi\Desktop\DSCF0021.jpg







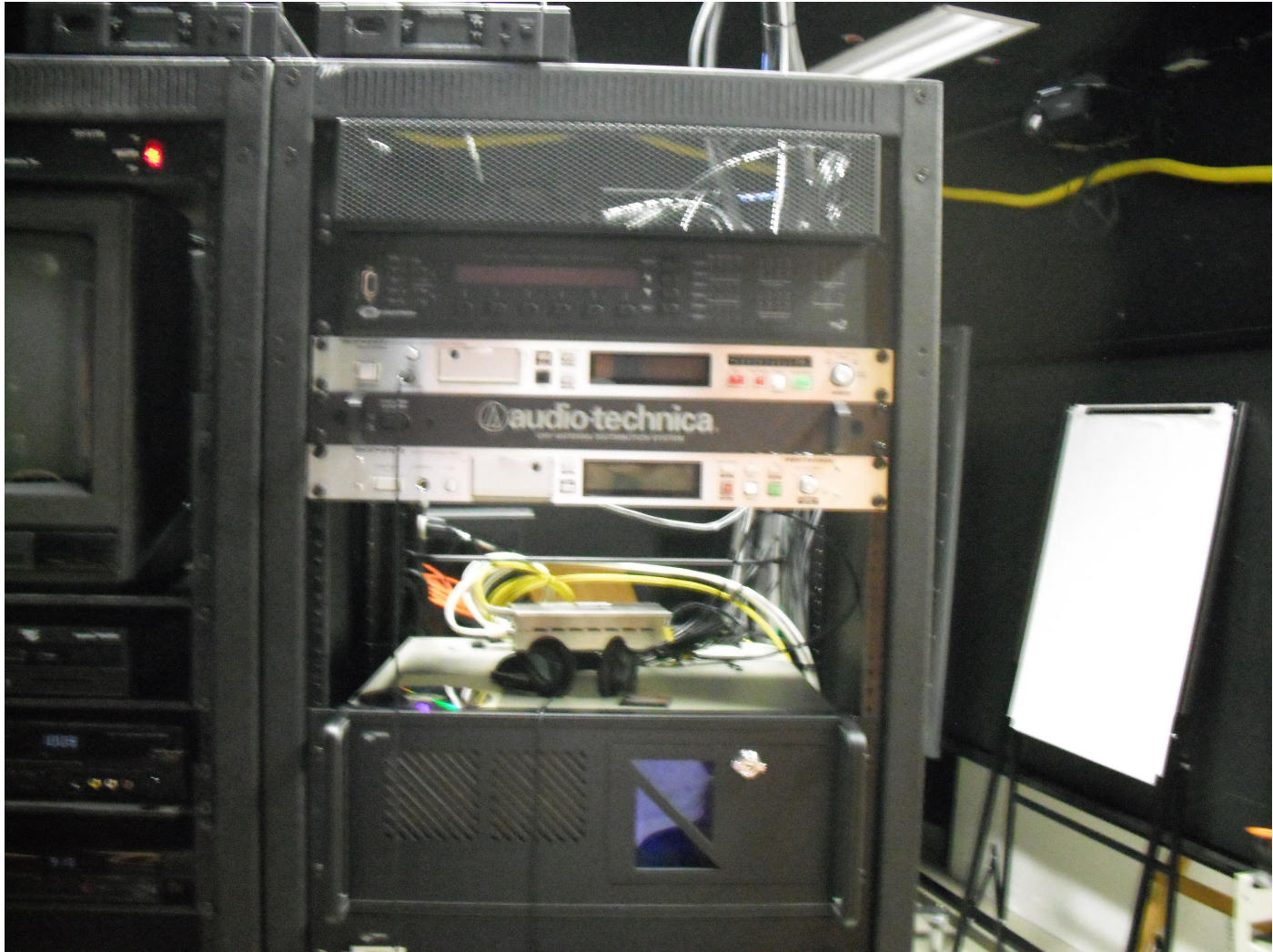
**Town of Aurora**

**Capital Projects**

<b>Project</b>	72238 Town Hall - Council Chambers A/V System Upgrades		
<b>Department</b>	Infrastructure & Environmental Services		
<b>Version</b>	Final Approved Budget	<b>Year</b>	2015

**Gallery**

C:\Users\Palma Palombi\Desktop\DSCF0012.jpg





Town of Aurora

Capital Projects

Project	72238 Town Hall - Council Chambers A/V System Upgrades		
Department	Infrastructure & Environmental Services		
Version	Final Approved Budget	Year	2015

Gallery

C:\Users\Palma Palombi\Desktop\DSCF0013.jpg





**Town of Aurora**

**Capital Projects**

<b>Project</b>	72238 Town Hall - Council Chambers A/V System Upgrades		
<b>Department</b>	Infrastructure & Environmental Services		
<b>Version</b>	Final Approved Budget	<b>Year</b>	2015

**Gallery**

C:\Users\Palma Palombi\Desktop\DSCF0014.jpg





# Town of Aurora

## Capital Projects

<b>Project</b>	72238 Town Hall - Council Chambers A/V System Upgrades		
<b>Department</b>	Infrastructure & Environmental Services		
<b>Version</b>	Final Approved Budget	<b>Year</b>	2015

### Gallery

C:\Users\Palma Palombi\Desktop\DSCF0015.jpg





**Town of Aurora**

**Capital Projects**

<b>Project</b>	72238 Town Hall - Council Chambers A/V System Upgrades		
<b>Department</b>	Infrastructure & Environmental Services		
<b>Version</b>	Final Approved Budget	<b>Year</b>	2015

**Gallery**

C:\Users\Palma Palombi\Desktop\DSCF0016.jpg



**Town of Aurora**

**Capital Projects**

<b>Project</b>	72238 Town Hall - Council Chambers A/V System Upgrades		
<b>Department</b>	Infrastructure & Environmental Services		
<b>Version</b>	Final Approved Budget	<b>Year</b>	2015

**Gallery**

C:\Users\Palma Palombi\Desktop\DSCF0017.jpg







**Town of Aurora**

**Capital Projects**

<b>Project</b>	72239 ACC Elevator Cab and Mech Controller Update		
<b>Department</b>	Infrastructure & Environmental Services		
<b>Version</b>	Final Approved Budget	<b>Year</b>	2015

**Gallery**

C:\Users\Phillip Galin\Pictures\IMG-20140807-00017.jpg



Town of Aurora

Capital Projects

Project	72239 ACC Elevator Cab and Mech Controller Update		
Department	Infrastructure & Environmental Services		
Version	Final Approved Budget	Year	2015

Gallery

C:\Users\Phillip Galin\Pictures\ACC Elevator 3.jpg







# Town of Aurora

## Capital Projects

Project

72241 89 Mosley - Condition Assessment Report Recommendations

Department

Infrastructure & Environmental Services

Version

Final Approved Budget

Year

2015

### Gallery

C:\Users\Palma Palombi\Desktop\estimate\_001.jpg

Town of Aurora Building Condition Assessment of 89 Mosley Street  
Town of Aurora Condition Assessment Report

#### 5.0 Estimate of Probable Repair Costs

Item	Description	Unit Cost	Estimated Quantity	Subtotal
<b>Structural Costs</b>				
1	Supply and Install New Roofing	\$35/m <sup>2</sup>	875	\$30,625
2	Brick Chimney Repair	\$7,500	1	\$7,500
3	Slab Levelling Layer	\$20/m <sup>2</sup>	750	\$15,000
4	New Eavestrough & Splash Pads	\$2,000	1	\$2,000
5	New Canopy at East Entrance	\$2,000	1	\$2,000
6	Sidewalk Repair	\$5,000	1	\$5,000
7	New Parging Coat at Entrance Porch	\$5,000	1	\$5,000
8	New Handrail	\$3,000	1	\$3,000
9	Repair Vinyl Siding	\$6,000	1	\$6,000
10	Interior Patching & Painting	\$6,000	1	\$6,000
11	New Roll-up Door	\$4,000/ea	1	\$4,000
12	Door & Window Trim / Frame Repair / Replacement	\$5,000	1	\$5,000
13	Concrete Crack Injection	\$2,500	1	\$2,500
<b>Electrical Costs</b>				
1	New Heat-Tracing Electrical Panel	\$10,000	1	\$10,000
<b>Mechanical Costs</b>				
1	New Combustion Air Intake, Fire Dampers and Louvers	\$1,500	1	\$1,500
2	Repair Hot Water Circulation Pump and Associated Pipe / Fittings	\$1,300	1	\$1,300
3	Replace Damaged Hydronic Radiators	\$1,300	4	\$5,200
4	Replace Damaged Baseboard Heaters	\$450	6	\$2,700
5	Replace Intake Louver	\$250	1	\$250
6	Replace Pipe Insulation	\$40/m	100	\$4,000
7	Replace Corroded Water Supply	\$60/m	30	\$1,800









**Town of Aurora**

**Capital Projects**

<b>Project</b>	34155 1/2 Tonne Pick-up (#500) Replacement		
<b>Department</b>	Infrastructure & Environmental Services		
<b>Version</b>	Final Approved Budget	<b>Year</b>	2015

**Gallery**

C:\Users\Aaron Karmazyn\Documents\2014 Capital\DSCF0943.JPG





**Town of Aurora**

**Capital Projects**

<b>Project</b>	34155 1/2 Tonne Pick-up (#500) Replacement		
<b>Department</b>	Infrastructure & Environmental Services		
<b>Version</b>	Final Approved Budget	<b>Year</b>	2015

**Gallery**

C:\Users\Palma Palombi\Desktop\#221, #250, #251, #500 008.JPG





**Town of Aurora**

**Capital Projects**

<b>Project</b>	34155 1/2 Tonne Pick-up (#500) Replacement		
<b>Department</b>	Infrastructure & Environmental Services		
<b>Version</b>	Final Approved Budget	<b>Year</b>	2015

**Gallery**

C:\Users\Palma Palombi\Desktop\CAM00222.jpg



**Town of Aurora**

**Capital Projects**

<b>Project</b>	34155 1/2 Tonne Pick-up (#500) Replacement		
<b>Department</b>	Infrastructure & Environmental Services		
<b>Version</b>	Final Approved Budget	<b>Year</b>	2015

**Gallery**

C:\Users\Palma Palombi\Desktop\CAM00224.jpg





**Town of Aurora**

**Capital Projects**

<b>Project</b>	34155 1/2 Tonne Pick-up (#500) Replacement		
<b>Department</b>	Infrastructure & Environmental Services		
<b>Version</b>	Final Approved Budget	<b>Year</b>	2015

**Gallery**

C:\Users\Palma Palombi\Desktop\CAM00226.jpg



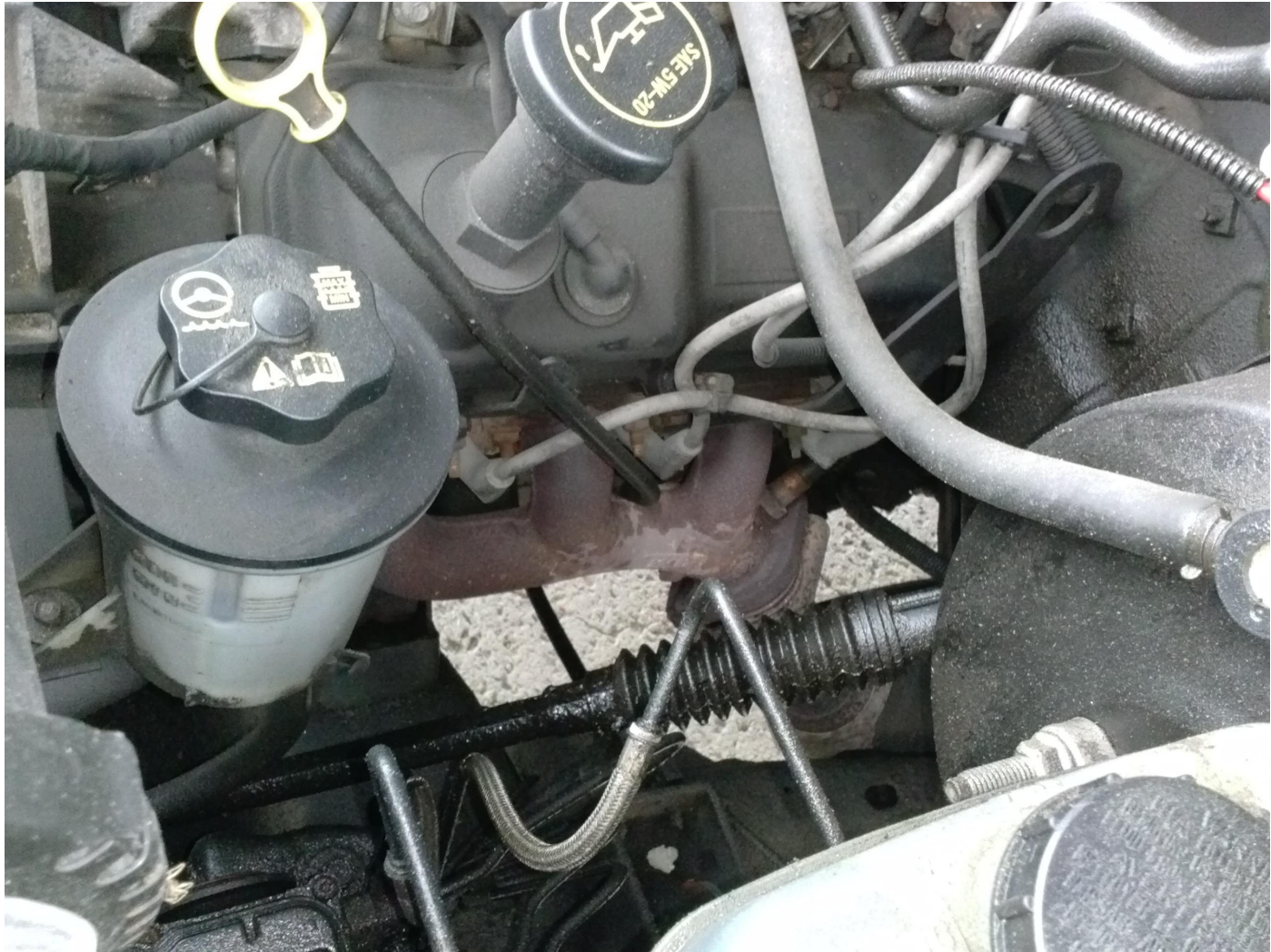
Town of Aurora

Capital Projects

Project	34155 1/2 Tonne Pick-up (#500) Replacement		
Department	Infrastructure & Environmental Services		
Version	Final Approved Budget	Year	2015

Gallery

C:\Users\Palma Palombi\Desktop\CAM00227.jpg



# Town of Aurora

## Capital Projects

<b>Project</b>	34156 Ice Resurfacer Replacement (#591)		
<b>Department</b>	Infrastructure & Environmental Services		
<b>Version</b>	Final Approved Budget	<b>Year</b>	2015

### Description

**PURPOSE:**

The replacement of 1996 ice resurfacer.

**PERFORMANCE/ACTIVITY IMPACTS:**

The failure of this equipment results in a disruption to the ice programming and lost revenues as well as disruption to community services and additional unforeseen costs.

This is not in the 10 year capital plan.

**EXPLANATION/HIGHLIGHTS**

Provide a 2015 Ice Resurfacer and replace the 18 year old equipment that is used on a daily basis. The old unit has become a service problem and is unreliable which could impact community programs and increase our fleet costs over time.

Class "D" Estimate

### Budget

	Total	2015	2016	2017	2018	2019	2020	Future
<b>Expenditures</b>								
<b>Estimated Expenditures</b>								
EQUIPMENT - OTHER	85,000	85,000						
	85,000	85,000						
<b>Expenditures Total</b>	<b>85,000</b>	<b>85,000</b>						
<b>Funding</b>								
<b>Infrastructure Sustainability Reserves</b>								
FLEET R&R RESERVE CONT'N	85,000	85,000						
	85,000	85,000						
<b>Funding Total</b>	<b>85,000</b>	<b>85,000</b>						
<b>Total Over (Under) Funded</b>								



**Town of Aurora**

**Capital Projects**

<b>Project</b>	34156 Ice Resurfacers Replacement (#591)		
<b>Department</b>	Infrastructure & Environmental Services		
<b>Version</b>	Final Approved Budget	<b>Year</b>	2015

**Gallery**

C:\Users\Palma Palombi\Desktop\CAM00276.jpg



Town of Aurora

Capital Projects

Project	34156 Ice Resurfacers Replacement (#591)		
Department	Infrastructure & Environmental Services		
Version	Final Approved Budget	Year	2015

Gallery

C:\Users\Palma Palombi\Desktop\CAM00281.jpg



**Town of Aurora**

**Capital Projects**

<b>Project</b>	34156 Ice Resurfacer Replacement (#591)		
<b>Department</b>	Infrastructure & Environmental Services		
<b>Version</b>	Final Approved Budget	<b>Year</b>	2015

**Gallery**

C:\Users\Palma Palombi\Desktop\CAM00283.jpg





**Town of Aurora**

**Capital Projects**

<b>Project</b>	34156 Ice Resurfacers Replacement (#591)		
<b>Department</b>	Infrastructure & Environmental Services		
<b>Version</b>	Final Approved Budget	<b>Year</b>	2015

**Gallery**

C:\Users\Palma Palombi\Desktop\CAM00287.jpg



Town of Aurora

Capital Projects

Project	34156 Ice Resurfacers Replacement (#591)		
Department	Infrastructure & Environmental Services		
Version	Final Approved Budget	Year	2015

Gallery

C:\Users\Palma Palombi\Desktop\fleet 056.jpg



# Town of Aurora

## Capital Projects

<b>Project</b>	34189 GMC Savana (#11)		
<b>Department</b>	Infrastructure & Environmental Services		
<b>Version</b>	Final Approved Budget	<b>Year</b>	2015

**Description**
**PURPOSE:**

This 2005 GMC truck is due for replacement and is a high mileage vehicle in the fleet. Part of the 2015 Capital plan is to turn over 10 year old trucks to work on reducing fleet operational costs.

**PERFORMANCE/ACTIVITY IMPACTS:**

Older Trucks within our fleet consume more fuel and require above average service levels to keep them operational. As a daily driver this truck is required for Town operations.

It is included in the 10 year capital plan.

**EXPLANATION/HIGHLIGHTS**

In an effort to reduce down time and ensure service levels, we are recommending that we continue the plan of replacing older service trucks from the fleet. This truck is getting to end of life on the life cycle costing model. The truck has 147,045 km and potentially requires increased repair if we defer this expenditure.

Class "D" estimate

**Budget**

	Total	2015	2016	2017	2018	2019	2020	Future
<b>Expenditures</b>								
<b>Estimated Expenditures</b>								
EQUIPMENT - OTHER	45,000	45,000						
	45,000	45,000						
<b>Expenditures Total</b>	<b>45,000</b>	<b>45,000</b>						
<b>Funding</b>								
<b>Infrastructure Sustainability Reserves</b>								
FLEET R&R RESERVE CONT'N	45,000	45,000						
	45,000	45,000						
<b>Funding Total</b>	<b>45,000</b>	<b>45,000</b>						
<b>Total Over (Under) Funded</b>								



**Town of Aurora**

**Capital Projects**

<b>Project</b>	34189 GMC Savana (#11)		
<b>Department</b>	Infrastructure & Environmental Services		
<b>Version</b>	Final Approved Budget	<b>Year</b>	2015

**Gallery**

C:\Users\Palma Palombi\Desktop\Fleet 042.jpg



Town of Aurora

Capital Projects

Project	34189 GMC Savana (#11)		
Department	Infrastructure & Environmental Services		
Version	Final Approved Budget	Year	2015

Gallery

C:\Users\Palma Palombi\Desktop\CAM00168 (2).jpg





Town of Aurora

Capital Projects

Project	34189 GMC Savana (#11)		
Department	Infrastructure & Environmental Services		
Version	Final Approved Budget	Year	2015

Gallery

C:\Users\Palma Palombi\Desktop\CAM00169 (2).jpg





Town of Aurora

Capital Projects

Project	34189 GMC Savana (#11)		
Department	Infrastructure & Environmental Services		
Version	Final Approved Budget	Year	2015

Gallery

C:\Users\Palma Palombi\Desktop\CAM00172 (2).jpg



# Town of Aurora

## Capital Projects

<b>Project</b>	34190 GMC Savana (#12)		
<b>Department</b>	Infrastructure & Environmental Services		
<b>Version</b>	Final Approved Budget	<b>Year</b>	2015

**Description**
**PURPOSE:**

This 2005 GMC truck is due for replacement and is a high mileage vehicle in the fleet. Part of the 2015 Capital plan is to turn over 10 year old trucks to work on reducing fleet operational costs

**PERFORMANCE/ACTIVITY IMPACTS:**

Older trucks within our fleet consume more fuel and require above average service levels to keep them operational. As a daily driver this truck is required for Town operations. It is included in the 10 year capital plan.

**EXPLANATION/HIGHLIGHTS**

In an effort to reduce down time and ensure service levels, we are recommending that we continue the plan of replacing older service trucks from the fleet. This truck is getting to the end of life on the life cycle costing model. The truck has 161,174Km and potentially will require increased repair if we defer this expenditure.

Class "D" estimate

**Budget**

	Total	2015	2016	2017	2018	2019	2020	Future
<b>Expenditures</b>								
<b>Estimated Expenditures</b>								
EQUIPMENT - OTHER	45,000	45,000						
<b>Expenditures Total</b>	<b>45,000</b>	<b>45,000</b>						
<b>Funding</b>								
<b>Infrastructure Sustainability Reserves</b>								
FLEET R&R RESERVE CONT'N	45,000	45,000						
<b>Funding Total</b>	<b>45,000</b>	<b>45,000</b>						
<b>Total Over (Under) Funded</b>								

**Town of Aurora**

**Capital Projects**

<b>Project</b>	34190 GMC Savana (#12)		
<b>Department</b>	Infrastructure & Environmental Services		
<b>Version</b>	Final Approved Budget	<b>Year</b>	2015

**Gallery**

C:\Users\Palma Palombi\Desktop\CAM00145 (2).jpg





Town of Aurora

Capital Projects

<b>Project</b>	34190 GMC Savana (#12)		
<b>Department</b>	Infrastructure & Environmental Services		
<b>Version</b>	Final Approved Budget	<b>Year</b>	2015

Gallery

C:\Users\Palma Palombi\Desktop\CAM00146 (2).jpg



Town of Aurora

Capital Projects

Project	34190 GMC Savana (#12)		
Department	Infrastructure & Environmental Services		
Version	Final Approved Budget	Year	2015

Gallery

C:\Users\Palma Palombi\Desktop\CAM00147 (2).jpg



Town of Aurora

Capital Projects

Project	34190 GMC Savana (#12)		
Department	Infrastructure & Environmental Services		
Version	Final Approved Budget	Year	2015

Gallery

C:\Users\Palma Palombi\Desktop\CAM00164 (2).jpg





**Town of Aurora**

**Capital Projects**

<b>Project</b>	34190 GMC Savana (#12)		
<b>Department</b>	Infrastructure & Environmental Services		
<b>Version</b>	Final Approved Budget	<b>Year</b>	2015

**Gallery**

C:\Users\Palma Palombi\Desktop\fleet 029.JPG





Town of Aurora

Capital Projects

Project	34194 Frt/FL80 (#29)		
Department	Infrastructure & Environmental Services		
Version	Final Approved Budget	Year	2015

Gallery

C:\Users\Palma Palombi\Desktop\Fleet 016.jpg







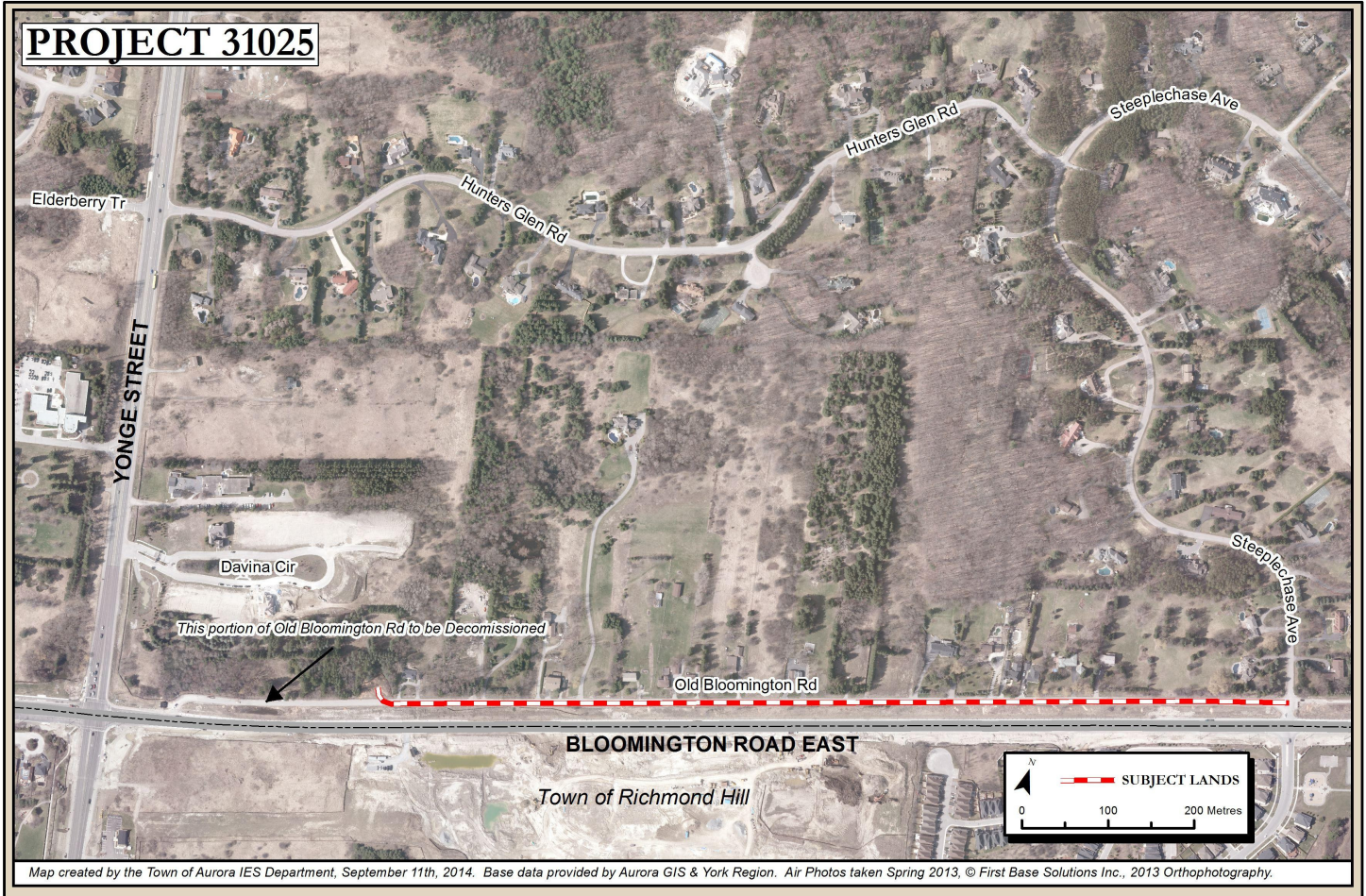
# Town of Aurora

## Capital Projects

Project	31025 Asphalt Paving - Old Bloomington Rd.		
Department	Infrastructure & Environmental Services		
Version	Final Approved Budget	Year	2015

### Gallery

F:\\_Departments\_space\Works\Other Projects\Capital Project Location Maps\2015\Project 31025 - Asphalt Paving on Old Bloomington Rd\CP\_31025.jpg







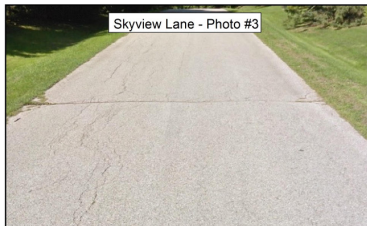
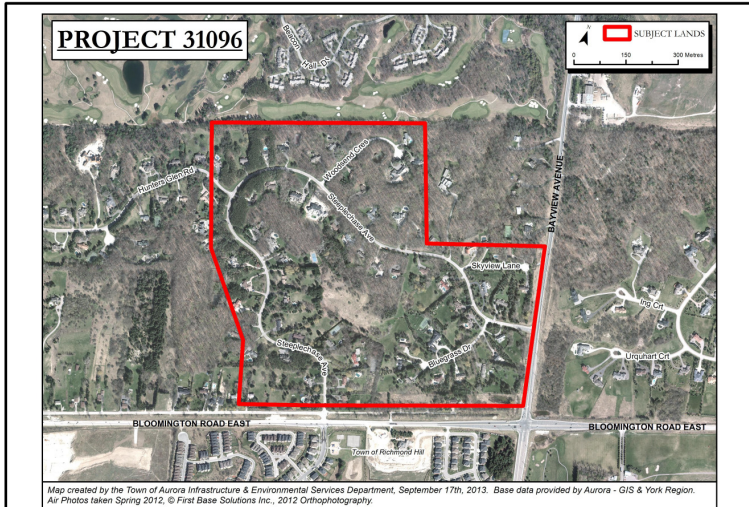
# Town of Aurora

## Capital Projects

<b>Project</b>	31096 Reconstruction - Bluegrass Drive, Steeplechase Avenue, Woodsend Crescent & Skyview		
<b>Department</b>	Infrastructure & Environmental Services		
<b>Version</b>	Final Approved Budget	<b>Year</b>	2015

### Gallery

S:\Financial Services\F05 Budgets & Estimates\2014 Budget\Captal\2014 IES Capital Plan Maps\CP\_31096.jpg





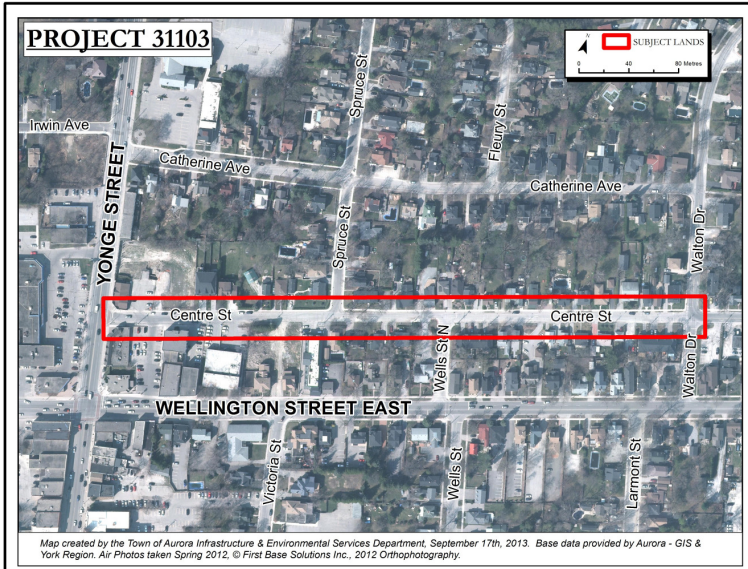
# Town of Aurora

## Capital Projects

<b>Project</b>	31103 Reconstruction - Centre St (Yonge to Walton Dr)		
<b>Department</b>	Infrastructure & Environmental Services		
<b>Version</b>	Final Approved Budget	<b>Year</b>	2015

### Gallery

S:\Financial Services\F05 Budgets & Estimates\2014 Budget\Capital\2014 IES Capital Plan Maps\CP\_31103.jpg







# Town of Aurora

## Capital Projects

<b>Project</b>	31105 Reconstruction of Haida Drive and Trillium Drive (Sections)		
<b>Department</b>	Infrastructure & Environmental Services		
<b>Version</b>	Final Approved Budget	<b>Year</b>	2015

### Gallery

F:\\_Departments\_space\Works\Other Projects\Capital Project Location Maps\2015\Project 31105 - Reconstruction of Haida Drive and Trillium Drive

**PROJECT 31105**

The main map is an aerial photograph showing the project area. A red dashed line outlines the 'SUBJECT LANDS' for the reconstruction of Haida Drive and Trillium Drive. The map is divided into two sections. The left section shows Haida Drive curving from the top left towards the bottom center, with streets including Boulding Dr, Haida Dr, McDonald Dr, James Henry Dr, and Wellington Street West. The right section shows Trillium Drive curving from the top right towards the bottom center, with streets including Kennedy St W, Pinehurst Crt, Murray Dr, Jasper Dr, Ironshore Crt, Cranberry Lane, and Devlin Pl. Two scale bars are provided: one for the left section (0 to 150 metres) and one for the right section (0 to 100 metres). Both include a north arrow and a legend for 'SUBJECT LANDS'.

**Haida Drive - Photo #1**

**Haida Drive - Photo #2**

**Trillium Drive - Photo #3**

Map created by the Town of Aurora Infrastructure & Environmental Services Department, August 19th, 2014. Base data provided by Aurora GIS & York Region. Air Photos taken Spring 2013, © First Base Solutions Inc., 2013 Orthophotography.





# Town of Aurora

## Capital Projects

Project	31107 Reconstruction - Brookland Avenue from Yonge Street to Banbury Court		
Department	Infrastructure & Environmental Services		
Version	Final Approved Budget	Year	2015

### Gallery

F:\\_Departments\_space\Works\Other Projects\Capital Project Location Maps\2015\Project 31107 - Reconstruction Brookland Avenue from Yonge St to

**PROJECT 31107**

The main map is an aerial photograph showing the project area. A red dashed line indicates the reconstruction of Brookland Avenue from Yonge Street to Banbury Court. Other streets shown include Golf Links Dr, Dunning Ave, Fairway Dr, Brookland Ave, Banbury Ct, Nisbet Dr, Sandusky Cres, and YONGE STREET. A legend in the bottom right of the map shows a red dashed line icon labeled 'SUBJECT LANDS'. A scale bar below the legend indicates 0, 50, and 100 metres. A north arrow is also present.

Map created by the Town of Aurora Infrastructure & Environmental Services Department, August 19th, 2014. Base data provided by Aurora GIS & York Region. Air Photos taken Spring 2013, © First Base Solutions Inc., 2013 Orthophotography.

Brookland Avenue - Photo #1

Brookland Avenue - Photo #2

Brookland Avenue - Photo #3





# Town of Aurora

## Capital Projects

<b>Project</b>	31108 Reconstruction - Algonquin Crescent and Haida Drive (Sections)		
<b>Department</b>	Infrastructure & Environmental Services		
<b>Version</b>	Final Approved Budget	<b>Year</b>	2015

### Gallery

F:\\_Departments\_space\Works\Other Projects\Capital Project Location Maps\2015\Project 31108 Reconstruction Algonquin Crescent and Haida Drive

### PROJECT 31108

Map created by the Town of Aurora Infrastructure & Environmental Services Department, August 19th, 2014. Base data provided by Aurora GIS & York Region. Air Photos taken Spring 2013, © First Base Solutions Inc., 2013 Orthophotography.

Haida Drive - Photo #1

Algonquin Crescent - Photo #2

Algonquin Crescent - Photo #3





# Town of Aurora

## Capital Projects

Project	31111 Reconstruction of Catherine Avenue		
Department	Infrastructure & Environmental Services		
Version	Final Approved Budget	Year	2015

### Gallery

F:\\_Departments\_space\Works\Other Projects\Capital Project Location Maps\2015\Project 31111 - Reconstruction of Catherine Avenue\CP\_31111.jpg

**PROJECT 31111**

The main image is an aerial photograph of a residential neighborhood. A red dashed line highlights the section of Catherine Avenue to be reconstructed, extending from Yonge Street on the west to Walton Drive on the east. The map includes labels for several streets: Yonge Street, Spruce St, Maple St, Fleury St, Cedar Cres, Centre St, Victoria St, Wells St N, and Wellington Street East. A scale bar at the bottom indicates 0, 50, and 100 metres. A legend shows a red dashed line icon labeled 'SUBJECT LANDS'. A north arrow is also present.

Map created by the Town of Aurora Infrastructure & Environmental Services Department, August 19th, 2014. Base data provided by Aurora GIS & York Region. Air Photos taken Spring 2013, © First Base Solutions Inc., 2013 Orthophotography.

**Catherine Avenue - Photo #1**

**Catherine Avenue - Photo #2**

**Catherine Avenue - Photo #3**

# Town of Aurora

## Capital Projects

<b>Project</b>	31112 Recon - Industrial Pkwy S - Wellington St - Industry St, Industry St - Industrial Pkwy S -		
<b>Department</b>	Infrastructure & Environmental Services		
<b>Version</b>	Final Approved Budget	<b>Year</b>	2015

### Description

**PURPOSE:**

To reconstruct Industrial Parkway South from Wellington Street to Industry Street and Industry Street from Industrial Parkway South to Mary Street. This reconstruction will include improvements to roadway, watermain, sanitary and storm sewer infrastructures.

**LINK TO STRATEGIC PLAN: Supporting an exceptional quality of life for all, Objective 2: Invest in sustainable infrastructure - maintain and expand infrastructure**

**APPROVED PENDING A DETAILED REPORT BACK TO COUNCIL - Approved Feb. 24, 2015**

**PERFORMANCE/ACTIVITY IMPACTS:**

The reconstruction of this infrastructure should reduce maintenance requirements for these roadways. Construction to accommodate Metrolinx request to create a right-hand turn lane on Industrial Parkway South and avoid gridlock at that intersection.

Staff will submit a request for funding under Ontario Community Infrastructure Fund (OCIF). OCIF priority will be projects that focus on renewal, rehabilitation and replacement. Projects must be completed by December 31, 2016. If approved OCIF can provide funding up to a maximum of 90% of total project cost or \$2 million, whichever is the lower amount.

**Class "D" Estimate**

**EXPLANATION/HIGHLIGHTS**

On the 0 - 100 PCI (Pavement Condition Index) scale, a rating of less than 25 for residential streets and 40 for collectors results in the streets in question being in the "Failed category. The PCI of the streets to be reconstructed are as follows: Industrial Parkway South from Wellington Street to Industry Street = 37, Industry Street from Industrial Parkway South to Mary Street = 43. **Advance for 2014 design and 2015 construction - to address the gridlock at Industrial Parkway South and Wellington Street intersection.**

Staff met with Metrolinx to discuss funding possibility, however Metrolinx is not willing to provide funding for the project.

Planned work includes:

- 0.4km of road reconstruction; - New sidewalk construction (both sides) on Industrial Parkway and extension of the sidewalk on the west side to Mary Street
- New sidewalk construction on the west side of Industry St.; - New watermain construction (both streets);
- Sanitary and storm sewer improvements on Industry St.; - Creation of right-hand turn lane on Industrial Parkway South at Wellington; and
- installation of a traffic light at Mary and Industrial Parkway South;
- \$10,000 additional consulting funding is requested for the design of the traffic signal at Mary and Industrial Parkway South
- This project has been initiated in 2014. The construction will take place in 2015. This project was included in previous 10 year Capital Plan (2013).

Funding request has been increased from the 10 year plan by \$485,000 due to detail design costs estimates (\$200,000), traffic light (Mary St) (\$210,000) and extension of SANI on the west side of IPC to Mary Street (\$75,000)

### Budget

	Total	2015	2016	2017	2018	2019	2020	Future
<b>Expenditures</b>								
<b>Estimated Expenditures</b>								
CONSULTING	10,000	10,000						
CONTRACTS	1,985,000	1,985,000						
	1,995,000	1,995,000						
<b>Expenditures Total</b>	<b>1,995,000</b>	<b>1,995,000</b>						
<b>Funding</b>								
<b>Development Charges Reserve Funds</b>								
ROADS & RELATED DC CONT'N	516,096	516,096						
	516,096	516,096						
<b>Infrastructure Sustainability Reserves</b>								
SANI SEWER R&R RES CONT'N	126,300	126,300						
RDS/SDWLKS/ST LGTS R&R	735,304	735,304						
Storm Sewers Contribution	155,000	155,000						
WATER & SEWER CONTRIBUTION	462,300	462,300						
	1,478,904	1,478,904						
<b>Funding Total</b>	<b>1,995,000</b>	<b>1,995,000</b>						



# Town of Aurora

## Capital Projects

<b>Project</b>	31112 Recon - Industrial Pkwy S - Wellington St - Industry St, Industry St - Industrial Pkwy S -		
<b>Department</b>	Infrastructure & Environmental Services		
<b>Version</b>	Final Approved Budget	<b>Year</b>	2015

**Funding**

<b>Funding Total</b>	1,995,000	1,995,000
<b>Total Over (Under) Funded</b>		

### Gallery

Q:\\_Departments\_space\Works\Capital Projects\CP 31112\CP\_31112.jpg

**PROJECT 31112**

WELLINGTON STREET EAST

Industrial Parkway South

Industry St

Mary St

Map created by the Town of Aurora Infrastructure & Environmental Services Department, September 17th, 2013. Base data provided by Aurora - GIS & York Region. Air Photos taken Spring 2012, © First Base Solutions Inc., 2012 Orthophotography.

Legend:  
■ SUBJECT LANDS  
- - - Sidewalk Extension  
● New Traffic Light

Scale: 0 50 100 Metres

Industry Street from Industrial Parkway South to Mary Street - Photo #1

Industrial Parkway South from Wellington Street East to Industry Street - Photo #2

Industrial Parkway South from Wellington Street East to Industry Street - Photo #3







# Town of Aurora

## Capital Projects

<b>Project</b>	34710 Street Light Poles St John's		
<b>Department</b>	Infrastructure & Environmental Services		
<b>Version</b>	Final Approved Budget	<b>Year</b>	2016

### Description

**PURPOSE:**

To re-attach street lights from existing hydro poles to new ones after Powerstream has replaced the original poles on St. John's Sideroad.

**PERFORMANCE/ACTIVITY IMPACTS:**

This project is required in order to restore lighting to St. John's Sideroad which will be lost as a result of Powerstream hydro pole replacement.

**Class "D" Estimate**

**EXPLANATION/HIGHLIGHTS**

Powerstream will replace the poles on St. John's Sideroad and as a result the Town's street lights which are presently attached to the old hydro poles will have to be moved to the new hydro poles.

**Planned work includes the following:** *Rewiring on St. John's Sdrd* - from railway tracks to Bayview Avenue on the north side

- 3 poles west of Pinnacle Trail - road crossing/feed relocation to new pole
  - 2 poles east of Pinnacle Trail - service relocation to new pole
  - 2 poles east of Trent Street - road crossing feed relocation to new pole
- Pole/light transfers - St John's Sdrd*
- railway tracks - Pinnacle Trail - 11 poles
  - Pinnacle Trail - Trent Street - 8 poles (one pole is a York Region light)
  - Trent Street - Bayview Ave - 1 poles

Project was included in 10-year Plan and initiated in 2014

**Additional funds requested for 2015: \$35,000 for the installation of 3 new poles to accommodate Town's hydro attachments that do not have enough clearance to allow installation on the existing poles. The additional funding request is necessary to prepare layout design, carry out photometric evaluation, tender documents and obtain Powerstream approval.**

### Budget

	<b>Total</b>	2016	2017	2018	2019	2020	2021	Future
--	--------------	------	------	------	------	------	------	--------









# Town of Aurora

## Capital Projects

<b>Project</b>	73154 Playground Surface Restoration - Various Parks		
<b>Department</b>	Parks & Recreation Services		
<b>Version</b>	Final Approved Budget	<b>Year</b>	2015

### Gallery

S:\Financial Services\F05 Budgets & Estimates\2014 Budget\Captal\2014 IES Capital Plan Maps\CP\_73154.jpg



**Town of Aurora**

**Capital Projects**

<b>Project</b>	73154 Playground Surface Restoration - Various Parks		
<b>Department</b>	Parks & Recreation Services		
<b>Version</b>	Final Approved Budget	<b>Year</b>	2015

**Gallery**

S:\Financial Services\F05 Budgets & Estimates\2014 Budget\Captial\2014 IES Capital Plan Maps\73154(1).JPG









**Town of Aurora**

**Capital Projects**

<b>Project</b>	73193 Bridge Assessment		
<b>Department</b>	Parks & Recreation Services		
<b>Version</b>	Final Approved Budget	<b>Year</b>	2015

**Gallery**

C:\Users\Jim Tree\Desktop\SAWMILL DAM 1.jpg





**Town of Aurora**

**Capital Projects**

<b>Project</b>	73193 Bridge Assessment		
<b>Department</b>	Parks & Recreation Services		
<b>Version</b>	Final Approved Budget	<b>Year</b>	2015

**Gallery**

C:\Users\Jim Tree\Desktop\SAWMILL DAM 2.jpg



**Town of Aurora**

**Capital Projects**

<b>Project</b>	73193 Bridge Assessment		
<b>Department</b>	Parks & Recreation Services		
<b>Version</b>	Final Approved Budget	<b>Year</b>	2015

**Gallery**

C:\Users\Jim Tree\Desktop\SAWMILL DAM 4.jpg



Town of Aurora

Capital Projects

<b>Project</b>	73193 Bridge Assessment		
<b>Department</b>	Parks & Recreation Services		
<b>Version</b>	Final Approved Budget	<b>Year</b>	2015

Gallery

C:\Users\Jim Tree\Desktop\SAWMILL DAM 5.jpg





Town of Aurora

Capital Projects

<b>Project</b>	73193 Bridge Assessment		
<b>Department</b>	Parks & Recreation Services		
<b>Version</b>	Final Approved Budget	<b>Year</b>	2015

Gallery

C:\Users\Jim Tree\Desktop\SAWMILL DAM 6.jpg



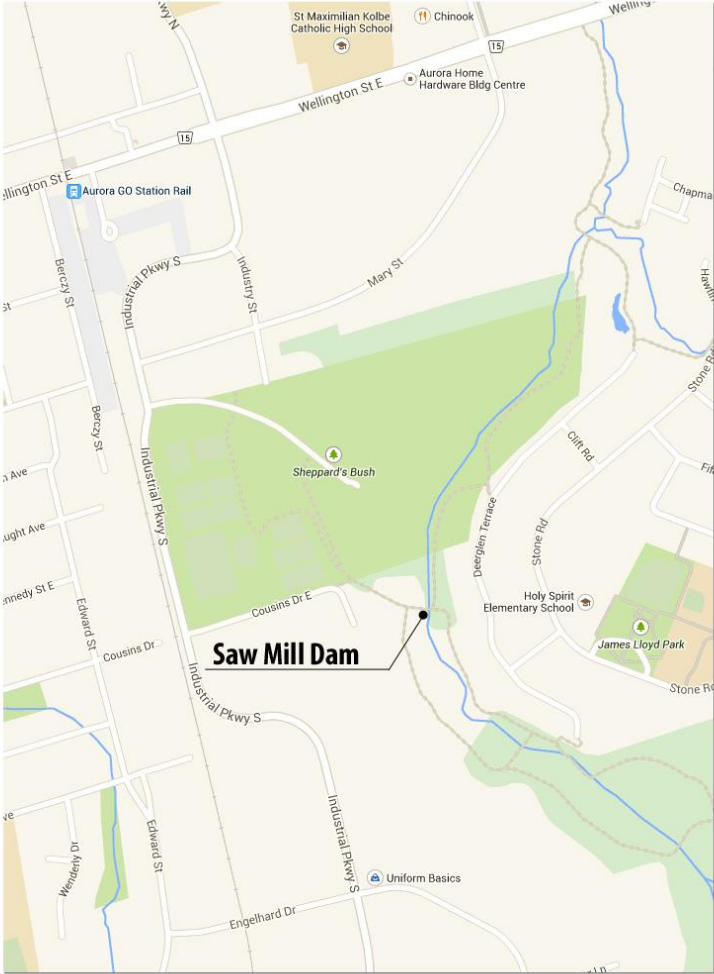
# Town of Aurora

## Capital Projects

<b>Project</b>	73193 Bridge Assessment		
<b>Department</b>	Parks & Recreation Services		
<b>Version</b>	Final Approved Budget	<b>Year</b>	2015

### Gallery

C:\Users\Jim Tree\Desktop\Saw Mill Dam-Final.jpg









**Town of Aurora**

**Capital Projects**

<b>Project</b>	73268 Wildlife Park - North Dam Rehabilitation		
<b>Department</b>	Parks & Recreation Services		
<b>Version</b>	Final Approved Budget	<b>Year</b>	2015

**Gallery**

C:\Users\Jim Tree\Desktop\DSC01585.JPG





**Town of Aurora**

**Capital Projects**

<b>Project</b>	73268 Wildlife Park - North Dam Rehabilitation		
<b>Department</b>	Parks & Recreation Services		
<b>Version</b>	Final Approved Budget	<b>Year</b>	2015

**Gallery**

C:\Users\Jim Tree\Desktop\DSC01586.JPG





**Town of Aurora**

**Capital Projects**

<b>Project</b>	73268 Wildlife Park - North Dam Rehabilitation		
<b>Department</b>	Parks & Recreation Services		
<b>Version</b>	Final Approved Budget	<b>Year</b>	2015

**Gallery**

C:\Users\Jim Tree\Desktop\DSC01587.JPG





**Town of Aurora**

**Capital Projects**

<b>Project</b>	73268 Wildlife Park - North Dam Rehabilitation		
<b>Department</b>	Parks & Recreation Services		
<b>Version</b>	Final Approved Budget	<b>Year</b>	2015

**Gallery**

C:\Users\Jim Tree\Desktop\DSC01589.JPG



**Town of Aurora**

**Capital Projects**

<b>Project</b>	73268 Wildlife Park - North Dam Rehabilitation		
<b>Department</b>	Parks & Recreation Services		
<b>Version</b>	Final Approved Budget	<b>Year</b>	2015

**Gallery**

C:\Users\Jim Tree\Desktop\DSC01591.JPG







# Town of Aurora

## Capital Projects

<b>Project</b>	73272 Hillary House Heritage Fencing Repair		
<b>Department</b>	Parks & Recreation Services		
<b>Version</b>	Final Approved Budget	<b>Year</b>	2015

### Gallery

C:\Users\Jim Tree\Desktop\2014-11-28-Hillary House Interface (2).jpg





**Town of Aurora**

**Capital Projects**

<b>Project</b>	73272 Hillary House Heritage Fencing Repair		
<b>Department</b>	Parks & Recreation Services		
<b>Version</b>	Final Approved Budget	<b>Year</b>	2015

**Gallery**

C:\Users\Jim Tree\Desktop\HILLARY FENCE 1.jpg





**Town of Aurora**

**Capital Projects**

<b>Project</b>	73272 Hillary House Heritage Fencing Repair		
<b>Department</b>	Parks & Recreation Services		
<b>Version</b>	Final Approved Budget	<b>Year</b>	2015

**Gallery**

C:\Users\Jim Tree\Desktop\HILLARY FENCE 2.jpg





# Town of Aurora

## Capital Projects

<b>Project</b>	14047 Computer & Related Infrastructure Renewal		
<b>Department</b>	Corporate & Financial Services		
<b>Version</b>	Final Approved Budget	<b>Year</b>	2015

Description
-------------

**PURPOSE:**

To undertake the annual replacement cycle purchases of computer equipment for the Town of Aurora. The replacement cycle for desktop, laptop and server equipment used throughout the corporation is commonly known as "evergreening". Funding for this initiative is required annually.

**PERFORMANCE/ACTIVITY IMPACTS:**

In order to maintain an acceptable fleet of computer equipment servicing the needs and requirements of the Town, the evergreening of this equipment is necessary.

In an effort to streamline costs and to help reduce the environmental impact, the desktop and laptop evergreening cycle changed to seven years in 2013. Server replacement schedules reflect on average a seven and a half year cycle. Units are changed out as required and based on life expectancy, resulting in an uneven planned expenditure over the next several years.

**EXPLANATION/HIGHLIGHTS**

Based on current IT computer and laptop inventories there are machines that will be targeted for replacement in 2015. This amount will allow for the replacement of those identified computers, laptops and servers/network infrastructure elements critical to our ongoing business operations.

Budget								
--------	--	--	--	--	--	--	--	--

	Total	2015	2016	2017	2018	2019	2020	Future
<b>Expenditures</b>								
<b>Estimated Expenditures</b>								
EQUIPMENT - OTHER	542,600	52,800	46,000	44,000	50,400	53,600	87,000	208,800
CONSULTING	20,000	20,000						
	562,600	72,800	46,000	44,000	50,400	53,600	87,000	208,800
<b>Expenditures Total</b>	<b>562,600</b>	<b>72,800</b>	<b>46,000</b>	<b>44,000</b>	<b>50,400</b>	<b>53,600</b>	<b>87,000</b>	<b>208,800</b>
<b>Funding</b>								
<b>Infrastructure Sustainability Reserves</b>								
COMPUTER RELATED EQUIP R&R	562,600	72,800	46,000	44,000	50,400	53,600	87,000	208,800
	562,600	72,800	46,000	44,000	50,400	53,600	87,000	208,800
<b>Funding Total</b>	<b>562,600</b>	<b>72,800</b>	<b>46,000</b>	<b>44,000</b>	<b>50,400</b>	<b>53,600</b>	<b>87,000</b>	<b>208,800</b>
<b>Total Over (Under) Funded</b>								





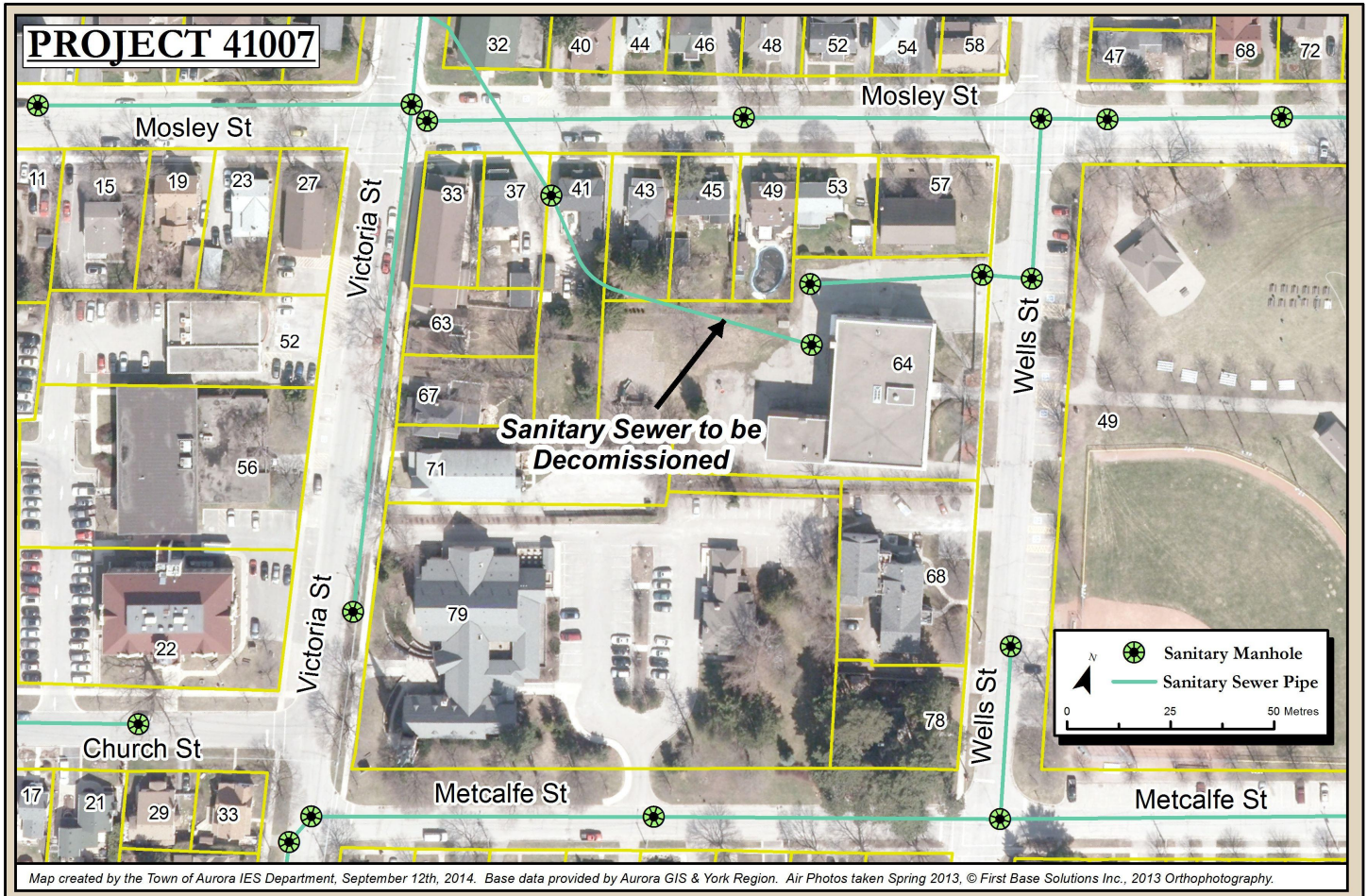
# Town of Aurora

## Capital Projects

<b>Project</b>	41007 Decommission Sewer Line Behind Wells St Public School		
<b>Department</b>	Infrastructure & Environmental Services		
<b>Version</b>	Final Approved Budget	<b>Year</b>	2015

### Gallery

F:\\_Departments\_space\Works\Other Projects\Capital Project Location Maps\2015\Project 41007 - Decommission Sewer Line behind Wells Street Public



# Town of Aurora

## Capital Projects

<b>Project</b>	41009 3 Phase Electrical Power		
<b>Department</b>	Infrastructure & Environmental Services		
<b>Version</b>	Final Approved Budget	<b>Year</b>	2015

**Description**

**PURPOSE:**

To bring 3-Phase power to the Temperance Street and Ballymore/Trent Sanitary Pumping Stations. This will be a two phase project with the Temperance St Pumping Station being changed out in 2015 and the Ballymore/Trent St Pumping Station being changed out in 2016.

**PERFORMANCE/ACTIVITY IMPACTS:**

Reduce the number of times the current pumps are clogging and operational costs of paying for a contractor to pull the pump and remove the debris. This will also reduce the Town's risk of an environmental sewage spill in the event both pumps fail (due to clogging) and the wet well backs up.

**EXPLANATION/HIGHLIGHTS**

The electrical supply powering these 2 sanitary pumping stations is only Single Phase power. In order to change the existing pumps to a larger/stronger non-clogging pump, 3-Phase Electrical power is required.

This Project was in the 10 year plan.

**Class B estimate.**

**Budget**

	Total	2015	2016	2017	2018	2019	2020	Future
<b>Expenditures</b>								
<b>Estimated Expenditures</b>								
CONTRACTS	30,000	30,000						
<b>Expenditures Total</b>	<b>30,000</b>	<b>30,000</b>						
<b>Funding</b>								
<b>Infrastructure Sustainability Reserves</b>								
WATER & SEWER CONTRIBUTION	30,000	30,000						
<b>Funding Total</b>	<b>30,000</b>	<b>30,000</b>						
<b>Total Over (Under) Funded</b>								





**Town of Aurora**

**Capital Projects**

<b>Project</b>	42052 Channel Improvements - Child Drive		
<b>Department</b>	Infrastructure & Environmental Services		
<b>Version</b>	Final Approved Budget	<b>Year</b>	2015

**Gallery**

C:\Users\Palma Palombi\Desktop\Child Drive 002.jpg





**Town of Aurora**

**Capital Projects**

<b>Project</b>	42052 Channel Improvements - Child Drive		
<b>Department</b>	Infrastructure & Environmental Services		
<b>Version</b>	Final Approved Budget	<b>Year</b>	2015

**Gallery**

C:\Users\Palma Palombi\Desktop\Child Drive 004.jpg







# Town of Aurora

## Capital Projects

<b>Project</b>	42053 Rehabilitation of Culvert on Yonge St. Approximately 220m north of Kennedy St.		
<b>Department</b>	Infrastructure & Environmental Services		
<b>Version</b>	Final Approved Budget	<b>Year</b>	2015

### Gallery

S:\Financial Services\F05 Budgets & Estimates\2014 Budget\Captal\2014 IES Capital Plan Maps\CP\_42053.jpg







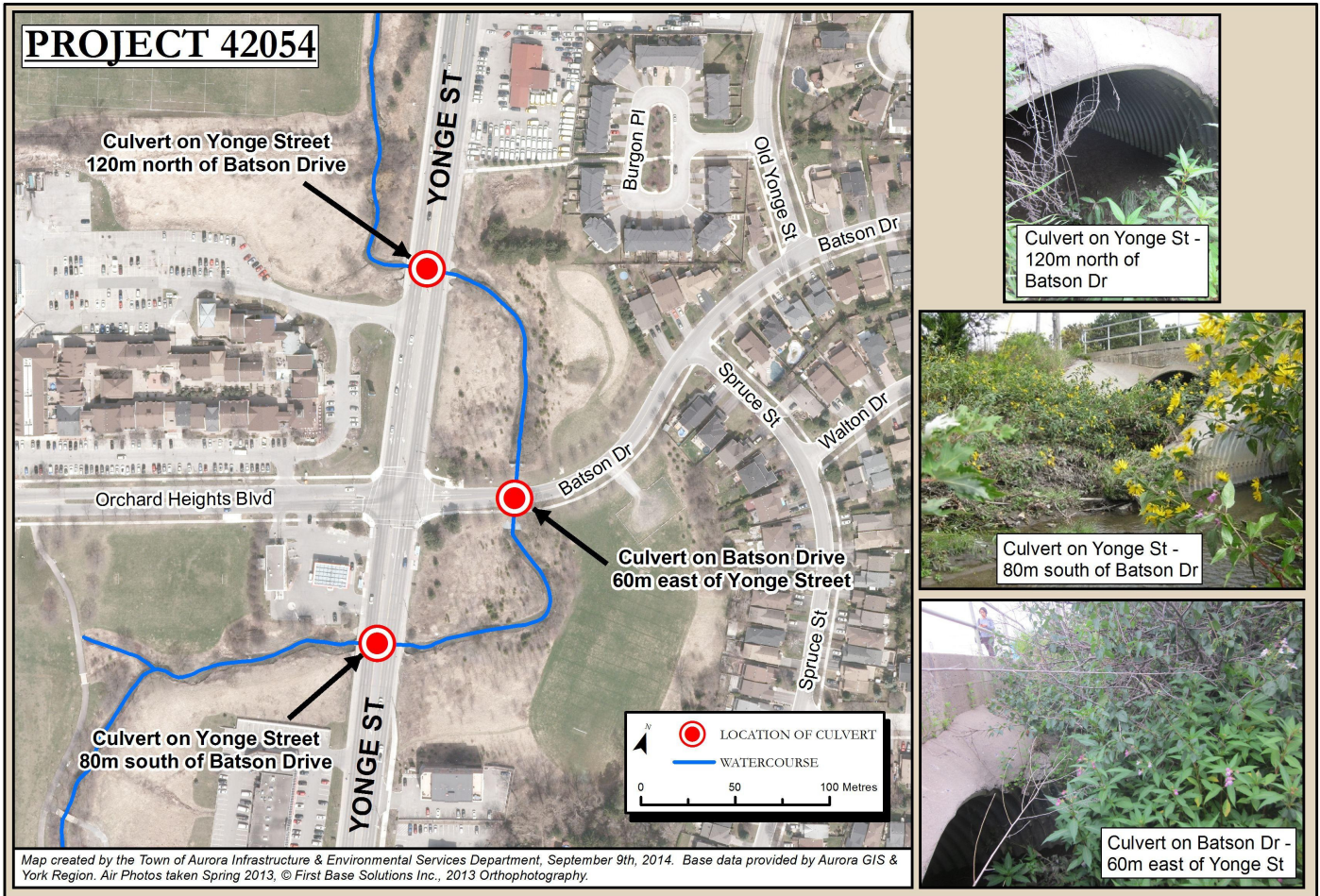
# Town of Aurora

## Capital Projects

<b>Project</b>	42054 Maintenance of Culverts on Yonge St and Batson Dr		
<b>Department</b>	Infrastructure & Environmental Services		
<b>Version</b>	Final Approved Budget	<b>Year</b>	2015

### Gallery

F:\\_Departments\_space\Works\Other Projects\Capital Project Location Maps\2015\Project 42054 - Maintenance of Culverts on Yonge Street and Batson



# Town of Aurora

## Capital Projects

<b>Project</b>	42058 Bridge Assessment		
<b>Department</b>	Infrastructure & Environmental Services		
<b>Version</b>	Final Approved Budget	<b>Year</b>	2015

### Description

**PURPOSE:**

To provide a town-wide bridge assessment in accordance with the MTO's Ontario Structure Inspection Manual (OSIM). The need for mobility requires that Ontario's highway system be kept in good repair. Structures are a vital part of this system and the efficiency of the system is impaired if these structures fail or their load-carrying capacity is reduced. To avoid such failings, an effective and systematic inspection of the structures on the highway network is required.

**LINK TO STRATEGIC PLAN: Supporting an exceptional quality of life for all - Objective 2: Invest in sustainable infrastructure. Maintain and expand infrastructure to support forecasted population growth through technology, waste management, roads, emergency services and accessibility.**

**PERFORMANCE/ACTIVITY IMPACTS:**

To provide funding for a systematic inspection of the structures on the Town's highway system as per the MTO's standards. A Town-wide bridge assessment will provide:

- detailed visual inspection and condition rating of structures and their components
- a uniform inspection approach for all structures in Ontario

**Class "D" estimate**

**EXPLANATION/HIGHLIGHTS**

The project includes:

- hiring a structural/consultant engineer to assess the condition of all bridges and large culverts on Town highways.
  - provide a condition rating for all these types of structures
  - provide recommendations for general maintenance, rehabilitation and/or replacement
  - the structural integrity, safety and condition of every bridge shall be determined through the performance of at least one inspection in every second calendar year under the direction of a professional engineer and in accordance with the MTO's standards and regulations.
  - bridge as a general definition is a structure which provides a roadway or walkway for the passage of vehicles across an obstruction, gap or facility and which is greater than 3m in span. The Town owns 28 such structures.
- This inspection is a legislated requirement.

The project has been included in the most recent 10-year capital plan.

### Budget

	Total	2015	2016	2017	2018	2019	2020	Future
<b>Expenditures</b>								
<b>Estimated Expenditures</b>								
CONSULTING	200,000	100,000				100,000		
	200,000	100,000				100,000		
<b>Expenditures Total</b>	<b>200,000</b>	<b>100,000</b>				<b>100,000</b>		
<b>Funding</b>								
<b>Infrastructure Sustainability Reserves</b>								
Storm Sewers Contribution	200,000	100,000				100,000		
	200,000	100,000				100,000		
<b>Funding Total</b>	<b>200,000</b>	<b>100,000</b>				<b>100,000</b>		
<b>Total Over (Under) Funded</b>								







# Town of Aurora

## Capital Projects

<b>Project</b>	43053 Bathurst/Orchard Hts Watermain Reconnection		
<b>Department</b>	Infrastructure & Environmental Services		
<b>Version</b>	Final Approved Budget	<b>Year</b>	2015

### Gallery

F:\\_Departments\_space\Works\Other Projects\Capital Project Location Maps\2015\Project 43053 - Old Watermain Bathurst St and Orchard Heights Blvd

