

SHINING HILL ESTATES COLLECTION INC.

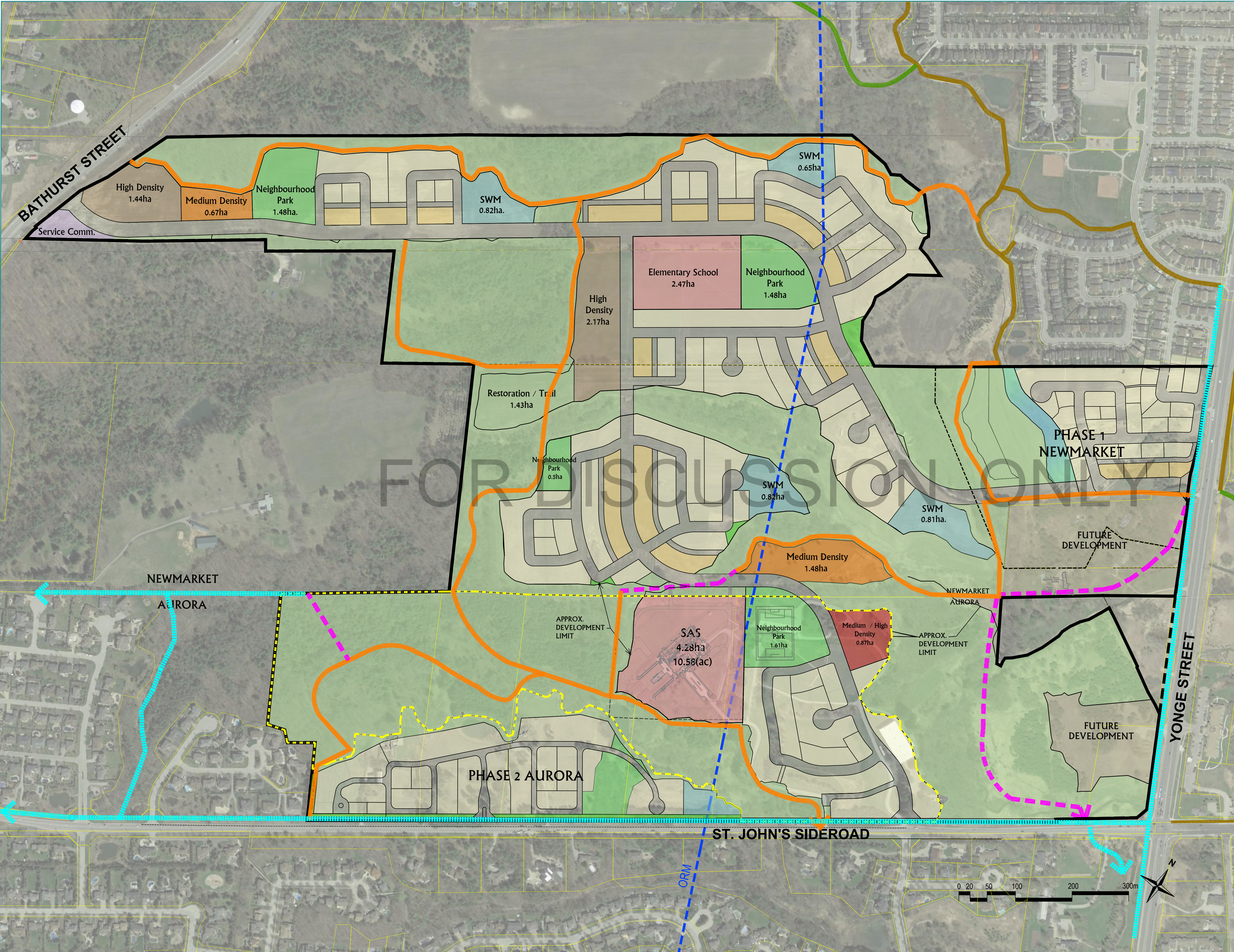
LAND USE AREAS

- Shining Hill Ownership
- Phase 3 Boundary
- Low Density
- Low Medium Lane
- Medium Density
- Medium / High Density
- High Density
- Service Commercial
- School
- Neighbourhood Park
- SWM
- Vista's
- Restoration/Trail
- NHS
- Road

TRAIL SYSTEM

- Existing Paved Trail
- Existing Mixed Surface Trail
- Proposed Trails Outside of Shining Hill Lands
- Planned / Proposed Trail System Within Shining Hill Lands
- Potential Trail Linkages (further study needed)
- Oak Ridges Moraine Boundary

FOR DISCUSSION ONLY



Development limits are preliminary

Date: March 8, 2021
Prepared for:
SHINING HILL ESTATES COLLECTION INC.



140 Renfrew Drive, Suite 201 | Markham, ON | L3R 9B3
905.512.0170 | mgp.ca

