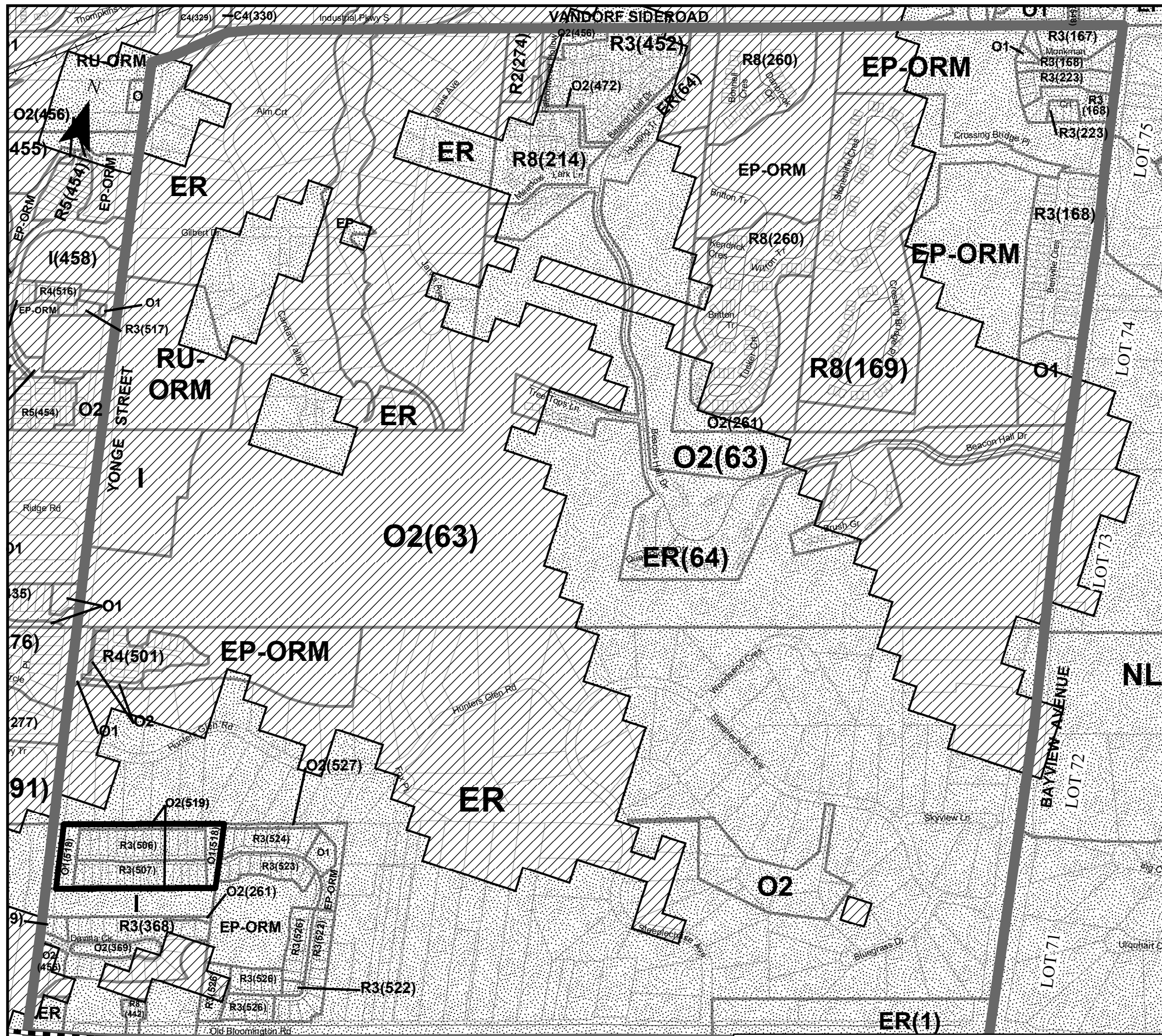


# SCHEDULE 'C' TO BY-LAW 6000-17 AQUIFER VULNERABILITY AREAS MAP NO. 7



ZONING LEGEND		
<b>RESIDENTIAL ZONES</b>		
<b>ER</b>	Estate Residential	
<b>ER-ORM</b>	Oak Ridges Moraine Estate Residential	
<b>R1</b>	Detached First Density Residential	
<b>R2</b>	Detached Second Density Residential	
<b>R3</b>	Detached Third Density Residential	
<b>R4</b>	Detached Fourth Density Residential	
<b>R5</b>	Detached Fifth Density Residential	
<b>R6</b>	Semi-Detached and Duplex Dwelling Residential	
<b>R7</b>	Special Mixed Density Residential	
<b>R8</b>	Townhouse Dwelling Residential	
<b>RA1</b>	First Density Apartment Residential	
<b>RA2</b>	Second Density Apartment Residential	
<b>EMPLOYMENT ZONES</b>		
<b>E1</b>	Service Employment	
<b>E2</b>	General Employment	
<b>E-BP</b>	Business Park	
<b>INSTITUTIONAL ZONES</b>		
<b>I</b>	Institutional	
<b>COMMERCIAL ZONES</b>		
<b>C1</b>	Convenience Commercial	
<b>C2</b>	Central Commercial	
<b>C3</b>	Service Commercial	
<b>C4</b>	Community Commercial	
<b>C5</b>	Major Retail	
<b>C6</b>	Mixed Residential Commercial	
<b>C7</b>	Residential	
<b>PROMENADE ZONES</b>		
<b>PD1</b>	Promenade Downtown	
<b>PD2</b>	Promenade Downtown - Special Mixed Density Residential	
<b>PDS1</b>	Promenade Downtown Shoulder - Central Commercial	
<b>PDS2</b>	Promenade Downtown Shoulder - Service Commercial	
<b>PDS3</b>	Promenade Downtown Shoulder - Institutional	
<b>PDS4</b>	Promenade Downtown Shoulder - Special Mixed Density Residential	
<b>RURAL ZONES</b>		
<b>RU</b>	Rural	
<b>RU-ORM</b>	Oak Ridges Moraine Rural	
<b>OPEN SPACE ZONES</b>		
<b>EP</b>	Environmental Protection	
<b>EP-ORM</b>	Oak Ridges Moraine Environmental Protection	
<b>O1</b>	Public Open Space	
<b>O2</b>	Private Open Space	
<b>O-ORM</b>	Oak Ridges Moraine Open Space	
<b>ORM COUNTRYSIDE AREA</b>		
<b>C-ORM</b>	Oak Ridges Moraine Countryside Area	
<b>ORM NATURAL CORE AREA</b>		
<b>NC-ORM</b>	Oak Ridges Moraine Natural Core Area	
<b>ORM NATURAL LINKAGE AREA</b>		
<b>NL-ORM</b>	Oak Ridges Moraine Natural Linkage Area	
<b>KNHF &amp; HYDROLOGICALLY SENSITIVE FEATURES AND MVPZ EXCEPTION 1 ZONE</b>		
<b>KNHF-1 Zone</b>	KNHF & Hydrologically Sensitive Features Exception 1 Zone	
<b>MVPZ-1 Zone</b>	MVPZ Exception 1 Zone	

**Note: Zoning Classifications and Provisions refer to Comprehensive Zoning By-law text document**

LEGEND	
	Oak Ridges Moraine Conservation Plan Area
	Boundary of Oak Ridges Moraine Conservation Plan Area Ontario Regulation 140/02
	Boundary of Oak Ridges Moraine Area Ontario Regulation 01/02
	Map #7 Area
	Municipal Boundary
	Under Appeal to the Ontario Municipal Board
	Lot
	Railway
	Hydro Corridor
<b>AQUIFER VULNERABILITY AREA Class</b>	
	High Vulnerability
	Low Vulnerability

**By-Law 6000-17 consists of Schedules "A" to "E" inclusive and accordingly each schedule shall be considered in the determination of zoning provisions pertaining to individual properties.**

NOTE: ZONING LINES AND PROPERTY LINES SHOWN ARE FOR INFORMATION PURPOSES ONLY. REFERENCE SHOULD BE MADE TO THE CORRESPONDING BY-LAWS AND REGISTERED PLANS.

THE BOUNDARIES OF THE ENVIRONMENTAL PROTECTION ZONE AND THE FILL AND CONSTRUCTION AREA WERE PLOTTED FROM MAPPING FROM THE LAKE SIMCOE REGION CONSERVATION AUTHORITY WHICH WAS PREPARED USING THE CRITERIA IN ONTARIO REGULATION 782/74. FOR MORE ACCURATE LOCATION REFERENCE SHOULD BE MADE TO THE ORIGINAL MAPPING. BASE INFORMATION PROVIDED BY THE REGION OF YORK.

DRAWN BY: ML	UPDATED BY: JS	APPROVED BY: ML
DATE: 05/2017	DATE UPDATED: 1/2024	FILE NAME: Schedule C Map 7_ (Aquifer)

CONCESSION 1 EYS

TOWN OF RICHMOND HILL

